

Municipal Power News



Thorntown Utilities

Volume 28, Issue 1 | Spring 2023



Sugar Creek Art Center

Since 2005, the Sugar Creek Art Center has occupied the historic building at 127 South Pearl Street in Thorntown, striving to celebrate local artistic expression and provide cultural education. While the building that the Art Center occupies has been around for over a century, and the Center itself is approaching its 20-year anniversary, many are still not aware of the many programs and services provided at the location.

From its construction to 1942, the building now inhabited by the Sugar Creek Art Center was the home of the ER Jaques Company—a leading business in poultry, eggs, wool, and hides for decades. The three-story brick structure in Thorntown was conveniently located along the Big Four Railroad right-of-way, allowing the company easy access to transport its diverse inventory. The building remained in the hands of the ER Jaques Company until the business decided to sell the structure in 1942 to Crystal Dairy Products.

In the following years, several businesses came and went through the doors of the historic building, most notably

-continued on page 4

Inside this Issue

Page 2

IMPA Responds to Winter Storm Elliott

Winter storm reminds the utility industry of the importance of reliability.

Page 4

Tidbits and Trivia

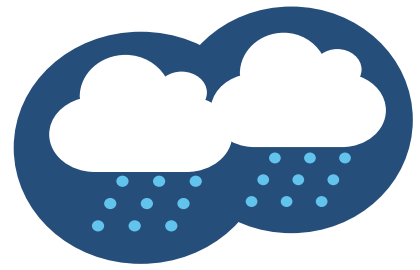
Give your answer for a chance to win a prize from IMPA!

Page 7

How Do I Save Energy in Hot Weather?

See how readers of the newsletter responded to this question.

IMPA Responds to Winter Storm Elliott



From December 22 to the 26 of 2022, Winter Storm Elliott swept across North America, causing record low temperatures and severe winter conditions throughout the United States. Snowfall, ice, and blizzard-like conditions blew through much of the Midwest while hazardous road conditions kept many of us hunkered down inside through the holidays. During these days of sub-zero temperatures, approximately 1.5 million utility customers throughout the country lost power (according to www.poweroutage.us).

Fortunately, Indiana utility customers were only a small portion of those without power, and the Indiana Municipal Power Agency (IMPA) worked diligently with neighboring utilities and the state's Regional Transmission Organizations to ensure the reliability of the power grid. IMPA's seven combustion turbines—totaling 249 megawatts (MW) of capacity in Anderson, Indiana, and Richmond, Indiana—were staffed and operational through the winter storm. The Anderson and Richmond units are run by IMPA employees who worked day and night through December's winter storm to ensure power was delivered to utility customers. These units,

which primarily run on natural gas and are built to operate in temperatures down to -20 degrees Fahrenheit, are a vital dispatchable resource in extreme weather events due to their capability to utilize ultra-low sulfur No. 2 fuel oil as a backup. The backup fuel allowed the units to run and provide power during the whole severe winter weather event.

Other staff members who were out in the field during the cold weather event included IMPA Service Corp's linemen and operations employees who responded to outages in member communities. During Winter Storm Elliott, IMPA Service Corp's crews responded to eight IMPA member communities to assist with power restoration to keep utility customers warm in their homes.

IMPA is grateful to the dedicated staff members who braved the historic winter conditions to ensure the rest of us could remain safe and warm at home. The Agency's reliability, whether during a typical day or an extreme period of uncertainty, is its upmost priority. Now, as we head toward the warmer weather of spring, IMPA looks forward to continuing its legacy of reliable operations and excellent electric service for all member communities. •

How Does Reliable Electricity Reach Me?

Your power is unique as it is distributed not by a for-profit electric utility, but rather by your municipally-owned, locally controlled electric utility. Your municipal electric utility—also known as a “public power” utility—receives its power from the Indiana Municipal Power Agency, a not-for-profit organization created by 61 public power utilities in the Midwest. This is where your electricity begins!

STEP 1

IMPA is the wholesale power provider to your community, meaning that it produces or purchases electricity (depending on what is most economically advantageous) and transmits that energy to your local utility. IMPA's power supply portfolio is made up of coal, natural gas, solar, wind, and nuclear energy. By providing its member communities with power from multiple sources, IMPA can maintain stable costs.

STEP 2

Once the power is generated, no matter from which type of resource, a set of equipment located within a substation is used to “step up” the electricity's voltage. A higher voltage means that the electricity can travel longer distances over high-voltage transmission lines with lower energy losses.



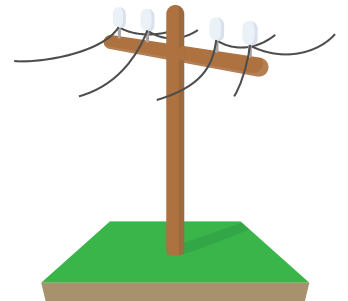
STEP 3

Once “stepped-up,” the electricity is sent along transmission lines, allowing it to reach IMPA's member communities. IMPA jointly owns a portion of the state's transmission system, which covers about 2/3 of Indiana.



STEP 4

Once the electricity reaches a community like yours, it is “stepped down” by a local substation, bringing the power to a lower voltage that will allow it to travel on your local community's distribution power lines.



STEP 5

The power then travels along local distribution lines owned by your public power utility to reach homes and businesses in the community.



Tidbits & Trivia

The **Indiana Municipal Power Agency** (IMPA) is a not-for-profit organization that provides a low-cost, reliable, and environmentally-responsible power supply to its members. IMPA provides this wholesale power to 61 communities in Indiana and Ohio, who collectively make up the Agency's membership.

Question: What is one benefit of driving an electric vehicle rather than a gas-powered car?



Send your answer to newsletter@impa.com, along with your name, e-mail address, and address for a chance to win an energy efficiency prize pack!

Reader Survey

Is there more about your community that you would like to know? Do you have questions about how public power or your municipally-owned utility works? Would you like to learn more tips and tricks as to how you can improve your home's energy efficiency?

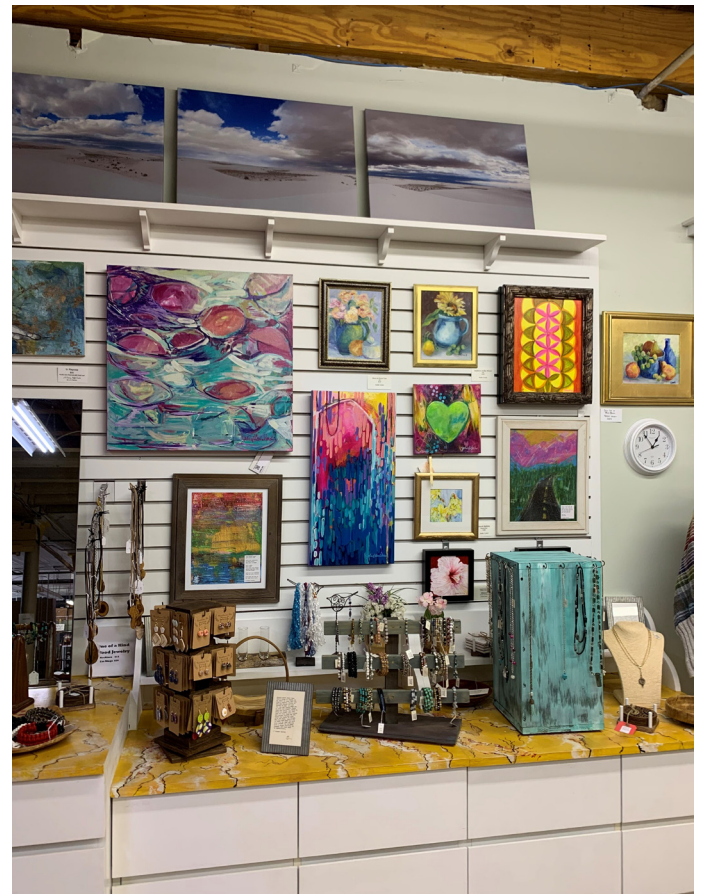
Reach out to newsletter@impa.com to suggest topics for future *Municipal Power News* newsletters and let us know what articles you enjoy most, and what you'd like to see next!

Sugar Creek Art Center

-continued from page 1

the Old Garment Factory that occupied the location up to the mid-1980s. Many Boone County residents remember it as a factory where many locals worked, sewing pieces for companies such as JCPenney, Sears, and Bobbie Brooks. The building again passed through many hands until the non-profit Sugar Creek Art Center was formed and purchased the building in the early 2000s.

Dr. Robert Gillan, known to many as "Bob," was a local philanthropist, antique lover, and art appreciator who gifted funds for the purchase and renovation of the building under the Art Center. Gillan himself was an accomplished





artist and mentor to many, earning 10 different teaching certificates throughout his lifetime. His contributions to the Art Center were integral to the organization's founding, and now, a full display of his antiques and art pieces remain on the second floor of the Center.

With the vision of Dr. Gillan and early Board Members of the organization, the Sugar Creek Art Center has successfully operated in Thorntown for nearly two decades and looks forward to the future. In addition to rotating exhibitions that are on display each month of the year, the Art Center also provides studios for rent for local artists. A gift shop on the first floor displays art pieces created by both resident and non-resident artists, giving visitors a chance to support local creators. The building also offers venue space where renters can use the facility for celebrations of up to 130 people. The Art Center's amenities continue to grow as the building goes through further renovation and the many volunteers involved with the Center commit their time and energy to the organization.

Next time you're downtown, pay a visit to the Sugar Creek Art Center and see for yourself how the non-profit is turning Thorntown into a cultural hub for all of Boone County. You can also visit the Center's website at www.sugarcreekartcenter.org for more information.●



What's the Word?

Gas Turbine Plant

noun

A facility which uses natural gas or other liquid fuels to power a combustion turbine and generate electricity. The first true gas turbine was patented in 1791!

IMPA owns seven combustion turbines and associated facilities totaling 419 MW in the aggregate. These include three units in Anderson, IN, two near Richmond, IN, and two in Indianapolis, IN. IMPA employees operate and maintain the combustion turbines located in Anderson and Richmond, while the plant in Indianapolis is operated and maintained under a contract with a separate utility that has two other units at the same facility.

For a chance to be featured in the newsletter and win a prize, send your recipe to:

MPN Recipes
11610 N. College Ave.
Carmel, IN 46032
or
newsletter@impa.com

The MUNICIPAL POWER NEWS is a periodic publication of the Indiana Municipal Power Agency and the 61 communities that it serves with wholesale power.

Editor: Niki Dick
Senior Director of Marketing Communications

Correspondent:
Whitney Hicks
Communications Coordinator

Cooking Corner

Broccoli Casserole

Recipe submitted by Kimberly of Paoli, Indiana

- 2 lbs broccoli, frozen or cooked
- 1/2 lb velveeta, cubed
- 1 roll ritz crackers, crumbled
- 1 stick butter divided in half

Cook broccoli according to package directions. Add velveeta and 1/2 stick butter. Cook until melted. Butter a 2 qt casserole dish. Pour broccoli into casserole dish. Pour crumbled crackers on top. Melt remaining 1/2 stick butter and pour on crackers. Bake on 350 degrees for 30 minutes and enjoy!

White Mountain Salad

Recipe submitted by Jean of Middletown, Indiana

- 1 small can crushed pineapple (in juice)
- 1/4 cup lemon juice
- 1 can Eagle brand milk
- 1 can chopped pecans
- 1 eight oz tub cool whip (thawed)

In a large bowl, stir all ingredients together. Cover and refrigerate for 2 hours.

“When I take this recipe to a dinner, I always get several requests for the recipe!” - Jean

MEMBERS

Advance
Anderson
Argos
Bainbridge
Bargersville
Blanchester, OH
Bremen
Brooklyn
Brookston
Centerville
Chalmers
Coatesville
Columbia City

Covington
Crawfordsville
Darlington
Dublin
Dunreith
Edinburgh
Etna Green
Flora
Frankfort
Frankton
Gas City
Greendale
Greenfield

Huntingburg
Jamestown
Jasper
Kingsford Heights
Knightstown
Ladoga
Lawrenceburg
Lebanon
Lewisville
Linton
Middletown
Montezuma
New Ross

Paoli
Pendleton
Peru
Pittsboro
Rensselaer
Richmond
Rising Sun
Rockville
Scottsburg
South Whitley
Spiceland
Straughn
Tell City

Thorntown
Tipton
Troy
Veedersburg
Walkerton
Washington
Waynetown
Williamsport
Winamac

How Do I Save Energy in Hot Weather?

Last year, we asked *Municipal Power News* readers, “What are some of the methods you use to reduce your energy consumption in hot weather?” Here’s what Kenneth had to say!

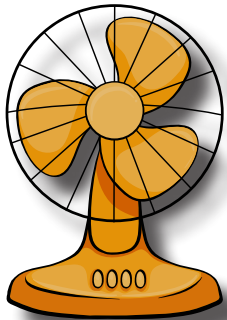
“Our answer at home is to close the drapes, blinds, and try to cook with the air fryer, microwave, or outside on the grill instead of using the stove or oven on the really hot days. We’ve already purchased new thermo sliding glass doors with blinds and low-e ratings. We’ve also spray-foamed the basement

walls and the underside of the roof. For a 1964 house, we feel pretty efficient.

At work, we try to close the blinds and raise the thermostat a degree or two. We also bought two digital smart thermostats and replaced the old mercury bulb sliders.”

-Kenneth E

That’s a great answer, full of energy efficiency tips! Below are a few other ways you and your family can save on energy this summer.



Energy Efficiency Tip #1

Use fans around your home to circulate cool air. Set ceiling fans to turn counter clockwise, as this will push air down and create a cooler feeling in the room.

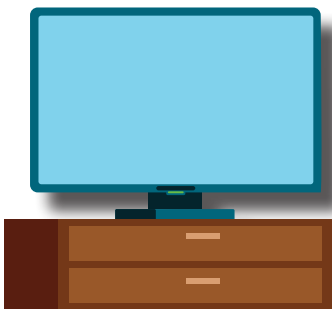
Energy Efficiency Tip #2

Replace air filters in your home with each season. Dirty air filters can cause your system to work harder and longer, using unnecessary energy as a result.



Energy Efficiency Tip #3

Keep lamps and TV sets away from your thermostat. Thermostats can sense the heat that these items give off, which can cause the A/C to run longer than required.



Indiana Municipal Power Agency
11610 N. College Ave.
Carmel, IN 46032

PRE-SORTED
STANDARD
U.S. Postage
PAID
Indianapolis, IN
Permit # 9555

The *Municipal Power News* is published
by the Indiana Municipal Power
Agency and Thorntown Utilities.

IMPA Commissioner: Gary Moody

2023 Sugar Creek Art Center Schedule

May - Western Boone High School Senior Art Show
June - Radiant Color Palette, Erin Salewicz Group Exhibition
July - Radiant Color Palette Part 2
Aug - Animal Menagerie, Group Exhibition and IWA
Sep - State of Flux, Solo Exhibition by Anita Gordon
Oct - Ram3 featuring resident artist mixed media mash!
Nov - SAKS to SCAC by Sue Semenick and Anita Gordon
Dec - Solo Exhibition by Daniel Driggs

Each month, the Sugar Creek Art Center hosts a reception
on the third Sunday at from 12 to 4pm. The Center is
open Thursday and Friday from 11am to 5pm each week,
and visitors are always welcome! For Saturdays, please
call 765-436-7102 or call for appointment 765-336-2488.

