

# Municipal Power News



Town of Pendleton

Volume 28, Issue 1 | Spring 2023

## Pendleton Named a 2022 Tree City USA

This February, the Arbor Day Foundation announced that Pendleton, Indiana was named a 2022 Tree City USA for the 13th year. This designation is in recognition of the town's commitment to effective tree care management and urban forestry practices.

Starting in 1976, Tree City USA became one of the Arbor Day Foundation's first programs in an effort to inspire nationwide change for the betterment of the country's environment. Since then, the program has provided a four-step framework regarding urban vegetation management to encourage communities to facilitate effective green spaces and protect trees across the nation. These four steps include:

- Maintaining a local tree board/department,
- Having a community tree care ordinance,
- Committing at least \$2 per capita through an annual community forestry budget and,
- Celebrating Arbor Day!

-continued on page 4



## Inside this Issue

### Page 2

*IMPA Responds to Winter Storm Elliott*

Winter storm reminds the utility industry of the importance of reliability.

### Page 4

*Tidbits and Trivia*

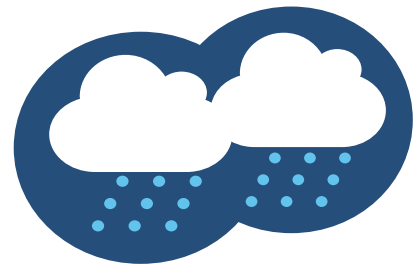
Give your answer for a chance to win a prize from IMPA!

### Page 7

*How Do I Save Energy in Hot Weather?*

See how readers of the newsletter responded to this question.

# IMPA Responds to Winter Storm Elliott



From December 22 to the 26 of 2022, Winter Storm Elliott swept across North America, causing record low temperatures and severe winter conditions throughout the United States. Snowfall, ice, and blizzard-like conditions blew through much of the Midwest while hazardous road conditions kept many of us hunkered down inside through the holidays. During these days of sub-zero temperatures, approximately 1.5 million utility customers throughout the country lost power (according to [www.poweroutage.us](http://www.poweroutage.us)).

Fortunately, Indiana utility customers were only a small portion of those without power, and the Indiana Municipal Power Agency (IMPA) worked diligently with neighboring utilities and the state's Regional Transmission Organizations to ensure the reliability of the power grid. IMPA's seven combustion turbines—totaling 249 megawatts (MW) of capacity in Anderson, Indiana, and Richmond, Indiana—were staffed and operational through the winter storm. The Anderson and Richmond units are run by IMPA employees who worked day and night through December's winter storm to ensure power was delivered to utility customers. These units,

which primarily run on natural gas and are built to operate in temperatures down to -20 degrees Fahrenheit, are a vital dispatchable resource in extreme weather events due to their capability to utilize ultra-low sulfur No. 2 fuel oil as a backup. The backup fuel allowed the units to run and provide power during the whole severe winter weather event.

Other staff members who were out in the field during the cold weather event included IMPA Service Corp's linemen and operations employees who responded to outages in member communities. During Winter Storm Elliott, IMPA Service Corp's crews responded to eight IMPA member communities to assist with power restoration to keep utility customers warm in their homes.

IMPA is grateful to the dedicated staff members who braved the historic winter conditions to ensure the rest of us could remain safe and warm at home. The Agency's reliability, whether during a typical day or an extreme period of uncertainty, is its upmost priority. Now, as we head toward the warmer weather of spring, IMPA looks forward to continuing its legacy of reliable operations and excellent electric service for all member communities. •

# How Does Reliable Electricity Reach Me?

Your power is unique as it is distributed not by a for-profit electric utility, but rather by your municipally-owned, locally controlled electric utility. Your municipal electric utility—also known as a “public power” utility—receives its power from the Indiana Municipal Power Agency, a not-for-profit organization created by 61 public power utilities in the Midwest. This is where your electricity begins!

## STEP 1

IMPA is the wholesale power provider to your community, meaning that it produces or purchases electricity (depending on what is most economically advantageous) and transmits that energy to your local utility. IMPA's power supply portfolio is made up of coal, natural gas, solar, wind, and nuclear energy. By providing its member communities with power from multiple sources, IMPA can maintain stable costs.

## STEP 2

Once the power is generated, no matter from which type of resource, a set of equipment located within a substation is used to “step up” the electricity's voltage. A higher voltage means that the electricity can travel longer distances over high-voltage transmission lines with lower energy losses.



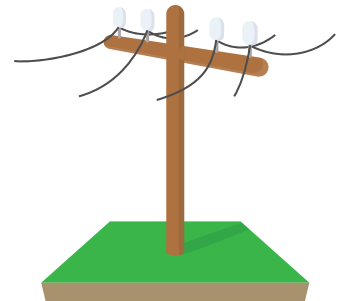
## STEP 3

Once “stepped-up,” the electricity is sent along transmission lines, allowing it to reach IMPA's member communities. IMPA jointly owns a portion of the state's transmission system, which covers about 2/3 of Indiana.



## STEP 4

Once the electricity reaches a community like yours, it is “stepped down” by a local substation, bringing the power to a lower voltage that will allow it to travel on your local community's distribution power lines.



## STEP 5

The power then travels along local distribution lines owned by your public power utility to reach homes and businesses in the community.



# Tidbits & Trivia

The **Indiana Municipal Power Agency** (IMPA) is a not-for-profit organization that provides a low-cost, reliable, and environmentally-responsible power supply to its members. IMPA provides this wholesale power to 61 communities in Indiana and Ohio, who collectively make up the Agency's membership.

Question: What is one benefit of driving an electric vehicle rather than a gas-powered car?



Send your answer to [newsletter@impa.com](mailto:newsletter@impa.com), along with your name, e-mail address, and address for a chance to win an energy efficiency prize pack!

## Reader Survey

Is there more about your community that you would like to know? Do you have questions about how public power or your municipally-owned utility works? Would you like to learn more tips and tricks as to how you can improve your home's energy efficiency?

Reach out to [newsletter@impa.com](mailto:newsletter@impa.com) to suggest topics for future *Municipal Power News* newsletters and let us know what articles you enjoy most, and what you'd like to see next!



## Tree City USA

-continued from page 1

Pendleton is proud to be a 2022 Tree City USA by meeting these four requirements.

"Tree City USA communities see the positive effects of an urban forest firsthand," said Dan Lambe, Chief Executive of the Arbor Day Foundation, in a press release regarding the announcement. "The trees being planted and cared for by Pendleton are ensuring that generations to come will enjoy a better quality of life. Additionally, participation in this program brings residents together and creates a sense of civic pride, whether it's through volunteer engagement or public education."

In response to the announcement, the town of Pendleton released a statement in celebration of the community's achievement.

"The Town is honored to be recognized for making urban forestry and tree care





management a community priority. In 2022, the Town of Pendleton has invested \$42.73 per capita in tree care management, trimmed 550 trees, removed 150 endangered trees, planted 25 new trees and devoted over 275 volunteer hours. Huge thanks goes to the Pendleton Urban Forestry Committee, Town Council, Town Electric, Street & Water Departments, Davey Resource Group, Plant

## Follow IMPA on Social Media!



Indiana Municipal  
Power Agency



@impapower



@ImpaPower



Indiana Municipal  
Power Agency

Growth Management and our community members for helping make this happen.”

Effective tree management is not only great for the environment, but it’s also essential to safe and reliable electric service. If left unmanaged, tree limbs that touch power lines can drain electricity off the electrical system, resulting in voltage loss.

-continued on page 8

## What’s the Word?

### Gas Turbine Plant

*noun*

A facility which uses natural gas or other liquid fuels to power a combustion turbine and generate electricity. The first true gas turbine was patented in 1791!

IMPA owns seven combustion turbines and associated facilities totaling 419 MW in the aggregate. These include three units in Anderson, IN, two near Richmond, IN, and two in Indianapolis, IN. IMPA employees operate and maintain the combustion turbines located in Anderson and Richmond, while the plant in Indianapolis is operated and maintained under a contract with a separate utility that has two other units at the same facility.

For a chance to be featured in the newsletter and win a prize, send your recipe to:

MPN Recipes  
11610 N. College Ave.  
Carmel, IN 46032  
or  
[newsletter@impa.com](mailto:newsletter@impa.com)

The MUNICIPAL POWER NEWS is a periodic publication of the Indiana Municipal Power Agency and the 61 communities that it serves with wholesale power.

Editor: Niki Dick  
Senior Director of  
Marketing Communications

Correspondent:  
Whitney Hicks  
Communications  
Coordinator

# Cooking Corner

## Broccoli Casserole

Recipe submitted by Kimberly of Paoli, Indiana

- 2 lbs broccoli, frozen or cooked
- 1 roll ritz crackers, crumbled
- 1/2 lb velveeta, cubed
- 1 stick butter divided in half

Cook broccoli according to package directions. Add velveeta and 1/2 stick butter. Cook until melted. Butter a 2 qt casserole dish. Pour broccoli into casserole dish. Pour crumbled crackers on top. Melt remaining 1/2 stick butter and pour on crackers. Bake on 350 degrees for 30 minutes and enjoy!

## White Mountain Salad

Recipe submitted by Jean of Middletown, Indiana

- 1 small can crushed pineapple (in juice)
- 1 can chopped pecans
- 1/4 cup lemon juice
- 1 eight oz tub cool whip (thawed)
- 1 can Eagle brand milk

In a large bowl, stir all ingredients together. Cover and refrigerate for 2 hours.

“When I take this recipe to a dinner, I always get several requests for the recipe!” - Jean

## MEMBERS

Advance  
Anderson  
Argos  
Bainbridge  
Bargersville  
Blanchester, OH  
Bremen  
Brooklyn  
Brookston  
Centerville  
Chalmers  
Coatesville  
Columbia City

Covington  
Crawfordsville  
Darlington  
Dublin  
Dunreith  
Edinburgh  
Etna Green  
Flora  
Frankfort  
Frankton  
Gas City  
Greendale  
Greenfield

Huntingburg  
Jamestown  
Jasper  
Kingsford Heights  
Knightstown  
Ladoga  
Lawrenceburg  
Lebanon  
Lewisville  
Linton  
Middletown  
Montezuma  
New Ross

Paoli  
Pendleton  
Peru  
Pittsboro  
Rensselaer  
Richmond  
Rising Sun  
Rockville  
Scottsburg  
South Whitley  
Spiceland  
Straughn  
Tell City

Thorntown  
Tipton  
Troy  
Veedersburg  
Walkerton  
Washington  
Waynetown  
Williamsport  
Winamac

# How Do I Save Energy in Hot Weather?

Last year, we asked *Municipal Power News* readers, “What are some of the methods you use to reduce your energy consumption in hot weather?” Here’s what Kenneth had to say!

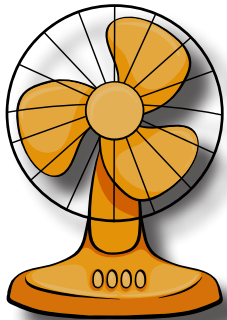
*“Our answer at home is to close the drapes, blinds, and try to cook with the air fryer, microwave, or outside on the grill instead of using the stove or oven on the really hot days. We’ve already purchased new thermo sliding glass doors with blinds and low-e ratings. We’ve also spray-foamed the basement*

*walls and the underside of the roof. For a 1964 house, we feel pretty efficient.*

*At work, we try to close the blinds and raise the thermostat a degree or two. We also bought two digital smart thermostats and replaced the old mercury bulb sliders.”*

-Kenneth E

That’s a great answer, full of energy efficiency tips! Below are a few other ways you and your family can save on energy this summer.



## Energy Efficiency Tip #1

Use fans around your home to circulate cool air. Set ceiling fans to turn counter clockwise, as this will push air down and create a cooler feeling in the room.

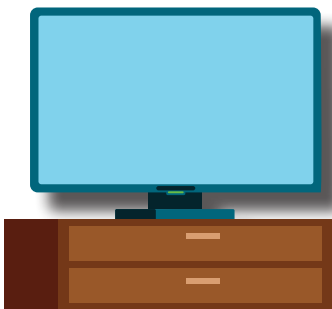
## Energy Efficiency Tip #2

Replace air filters in your home with each season. Dirty air filters can cause your system to work harder and longer, using unnecessary energy as a result.



## Energy Efficiency Tip #3

Keep lamps and TV sets away from your thermostat. Thermostats can sense the heat that these items give off, which can cause the A/C to run longer than required.



Indiana Municipal Power Agency  
11610 N. College Ave.  
Carmel, IN 46032

PRE-SORTED  
STANDARD  
U.S. Postage  
PAID  
Indianapolis, IN  
Permit # 9555



The Municipal Power News is published  
by the Indiana Municipal Power  
Agency and the Town of Pendleton.

IMPA Commissioner: Craig Switzer

# Tree City USA

-continued from page 5

Low voltage can damage motor-driven appliances such as refrigerators, washing machines, and sensitive electronics like computers. Even worse, tree limbs touching power lines put constant stress on live wires and could potentially create a fire hazard if the branches catch fire and fall to the ground. Even if limbs aren't directly touching utility lines, but are close by, they could easily be knocked into a line during a storm, risking a power outage. The utility's ability to maintain healthy trees that are trimmed away from

power lines helps your utility ensure the high-quality electric service that they've provided for decades.

Pendleton's municipally-owned power utility is proud to work with the town's committees, consultants, and volunteers to keep the community safe, powered, and beautiful.●

