

Municipal Power News



Town of Pittsboro
Volume 29, Issue 1 | Spring 2024



Landscaping and Electric Safety

Outdoor landscaping activities become a staple of many peoples' weekly routine as we get closer to springtime. Strategically planting trees and vegetation around your property can help you conserve energy year-round and enjoy an increased amount of wildlife in your yard. However, if placed unwisely or left uncared for, the vegetation can create unsafe conditions for you, your property, and utility workers serving your community. Pittsboro's municipal electric utility wants to ensure that residents have the best information to help them make smart decisions when it comes to planting and maintaining foliage around homes and businesses.

One of the most important components of maintaining a safe landscape is protecting utility lines in the environment. Your electric utility makes efforts to trim growing branches away from power lines for the community's safety. If left unmanaged, tree limbs that touch power lines can drain electricity off the electrical system, resulting in voltage loss. Low voltage can damage motor-driven appliances such as refrigerators, washing machines, and sensitive electronics like

-continued on page 4

Inside this Issue

Page 2

10 Years of Solar Power

IMPA celebrates a decade of its solar program.

Page 4

Reader Feedback

Respond to the question featured on this page for a chance to win a prize!

Page 7

The Benefits of Public Power

Look through reader responses from the last edition of *Municipal Power News*.

IMPA Celebrates 10 Years of its Solar Program

With the goal to expand the diversity of its power supply portfolio with economically feasible renewable generation sites, the Indiana Municipal Power Agency (IMPA) launched its solar program to construct solar parks within its member communities in 2014. At the time, solar power was just emerging as a cost-effective fuel resource for utilities, but IMPA embraced the challenge of incorporating this resource into its power supply portfolio to further diversify its resources and prepare for the future. Now, 10 years and 50 solar parks later, IMPA is proud of the numerous accomplishments made through its solar program and the nearly 200 megawatts of power that it contributes to all 61 member communities served by the Agency.



IMPA began its program cautiously, only constructing three demonstration solar parks in Frankton, Rensselaer, and Richmond, Indiana in its first year. Each site was housed on about eight acres of land and with 4,000 solar panels, and by the end of the year, the three sites generated 1.5 million kilowatt hours.

Through this process, IMPA expanded its knowledge of solar power and the steps needed to successfully develop parks of this scale in the most cost-effective way possible. Besides relying on in-house expertise, IMPA worked with local contractors in each of the three member communities to keep costs down and support local businesses. When construction of the three solar parks came in under budget while reliably providing environmentally-responsible electricity, IMPA and its Board of Commissioners started to envision the vast possibilities of building solar in several member communities. A spark was lit, and by 2015, six more solar parks were constructed in member communities, adding over 9 megawatts (MW) of solar capacity to the Agency's power supply portfolio.

In the ensuing years, IMPA increased its renewable footprint by building solar in collaboration with its member communities. As time progressed, so did the Agency's proficiency in constructing solar parks. By 2017, IMPA was constructing each of its solar parks with a single-axis



tracking system, allowing solar panels at each site to effectively track the movement of the sun throughout the day and generate more electricity as a result. The program continued to expand with new solar parks being constructed in member communities throughout the state, as well as additional parks being added to some communities whose infrastructure were able to handle more than one solar park . With the help of this program, IMPA achieved at least 30% low or no carbon resources by 2020 while still offering some of the lowest wholesale electric rates in the state of Indiana.

The success of IMPA’s solar program continues to thrive in recent years. In 2023, IMPA had its most prolific year yet for its solar park program as the Agency brought seven solar parks online in member communities. The agency’s largest park – at 9.9 MW – was completed, and IMPA celebrated a milestone as the Agency’s 50th solar park came online late in the year. From a small, idealistic program that started with three, 1-MW parks in 2014,

the Agency’s solar park program has grown exponentially in under 10 years. The Agency now has over 196 MW of solar power in member communities. Plans are already underway for four additional parks, and the Agency expects to surpass 209 MW of solar capacity by the end of 2025. The solar park program plays a key role in IMPA’s diverse power supply portfolio, and with its proven success rate, the Agency continues to provide a diverse fuel mix that benefits both consumers and the environment. •



IMPA’s 50th Solar Park Ribbon Cutting

Reader Feedback

The **Indiana Municipal Power Agency** (IMPA) is a not-for-profit organization that provides a low-cost, reliable, and environmentally-responsible power supply to its members. IMPA provides this wholesale power to 61 communities in Indiana and Ohio, who collectively make up the Agency's membership.

What does having reliable electricity mean to you and your family?



Send your answer to newsletter@impa.com, along with your name, e-mail address, and address for a chance to win an energy efficiency prize pack!

Topic Survey

Is there more about your community that you would like to know? Do you have questions about how public power or your municipally-owned utility works? Would you like to learn more tips and tricks as to how you can improve your home's energy efficiency?

Reach out to newsletter@impa.com to suggest topics for future *Municipal Power News* newsletters and let us know what articles you enjoy most, and what you'd like to see next!



Landscaping

-continued from page 1

computers. Even worse, tree limbs touching power lines put constant stress on live wires and potentially create a fire hazard if the branches catch fire and fall to the ground. Even if limbs aren't directly touching utility lines, but are close by, they could easily be knocked into a line during a storm, risking a power outage. Maintaining healthy trees that are trimmed away from power lines will help the local utility ensure the high-quality electric service that they've provided for over 100 years.

In addition to trimming and managing trees near power lines, residents can contribute to a safe community by strategically planting vegetation away from utility poles. When residents begin a landscaping project, it is important that they understand the best practices for planting



trees safely. Likely the most important information regarding tree planting is that each species of tree has an ideal location on a property based on its eventual size. Large trees, such as maple, oak, spruce, and pine trees, can easily surpass 50 feet in height at full maturation. These wide-reaching trees can block cold winter winds and provide shade to homes, reducing utility costs if

strategically planted. However, if these trees are planted near power lines, their growth can easily become dangerous as they approach and eventually touch the utility lines. Tree contact with power lines is a major cause of power outages and sometimes wildfires in the United States. Therefore, when planting trees, be sure to keep large species far from utility lines.

Some small species of trees, such as redbud, dogwood, and crabapple, generally do not exceed 25 feet in height. While these trees are safer to plant around utility lines, residents should avoid planting these within 20 feet of a power line to ensure safety. Pittsboro's electric utility truly appreciates your consideration while landscaping on your property, allowing them to continue providing high quality electric service. •

Keep Trees Away from Power Lines

- Trees planted within 20 feet of power lines should have a mature height of less than 25 feet.
- Trees that mature at 25-45 feet should be planted 20 to 50 feet away from power lines.
- Trees that mature greater than 45 feet should be planted more than 50 feet away from power lines.

What's the Word?

Investigating Power Terminology

Watt

A watt is a unit of measurement used to show the rate of energy transfer over one second of time. Consequently, a kilowatt is equal to 1,000 watts, a megawatt is 1 million watts, and a gigawatt equals 1 billion watts.

You may have heard of a kilowatt hour (kWh), which is a common billing unit used by most utilities in the electric industry. Essentially, a kWh simply shows the energy use per hour of an appliance, device, or entire home measured in kilowatts. For example, a space heater rated at 1.5 kWh consumes 1,500 watts of power in one hour of continuous use!

Watts are named after James Watt, an inventor and engineer born in 1736 who also created the concept of horsepower.

Cooking Corner

Meatloaf

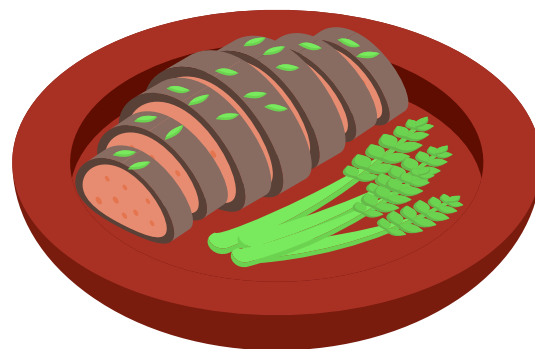
Recipe submitted by Marcie of Richmond, Indiana

- 2 lbs hamburger
- 2 eggs
- 10 to 12 crackers (crumbled)
- 1 onion diced
- 1 tsp baking soda
- 1/2 cup milk
- 2 pkgs instant oatmeal
- 2 to 3 squirts of ketchup

Mix all ingredients well. Form into a loaf and put into a greased loaf pan. Cover with ketchup. Refrigerate for 20 to 30 minutes covered to help the loaf firm up. Preheat oven to 350 degrees. Remove loaf from refrigerator and bake in preheated oven for 1 to 1 1/2 hours.

Once meatloaf is baked, remove from oven. Let rest on top of the stove for 30 minutes before cutting into so that it won't fall apart.

This recipe serves about 4 to 6 people. Invite your friends and family over to enjoy!



For a chance to be featured in the newsletter and win a prize, send your recipe to:

MPN Recipes
11610 N. College Ave.
Carmel, IN 46032
or
newsletter@impa.com

The MUNICIPAL POWER NEWS is a periodic publication of the Indiana Municipal Power Agency and the 61 communities that it serves with wholesale power.

Editor: Niki Dick
Senior Director of Marketing Communications

Correspondent:
Whitney Hicks
Communications Coordinator

MEMBERS

Advance
Anderson
Argos
Bainbridge
Bargersville
Blanchester, OH
Bremen
Brooklyn
Brookston
Centerville
Chalmers
Coatesville
Columbia City

Covington
Crawfordsville
Darlington
Dublin
Dunreith
Edinburgh
Etna Green
Flora
Frankfort
Frankton
Gas City
Greendale
Greenfield

Huntingburg
Jamestown
Jasper
Kingsford Heights
Knightstown
Ladoga
Lawrenceburg
Lebanon
Lewisville
Linton
Middletown
Montezuma
New Ross

Paoli
Pendleton
Peru
Pittsboro
Rensselaer
Richmond
Rising Sun
Rockville
Scottsburg
South Whitley
Spiceland
Straughn
Tell City

Thorntown
Tipton
Troy
Veedersburg
Walkerton
Washington
Waynetown
Williamsport
Winamac

What are the Benefits of Public Power?

In the last issue of the *Municipal Power News*, we asked you what some of the benefits of public power are. As a reader of this newsletter, you live in a public power community, which means the electric utility that serves your power needs is a not-for-profit utility, owned and operated by your municipality.

The benefits of public power are numerous. Here is what some of our readers had to say about the advantages of living in a public power community.

“By being a part of the community, public power utilities can boost investment in the community, support local education, and be involved with charitable programs. They also care about the overall well-being of the communities they serve.”

– Fred

“Since public utilities are nonprofit organizations, their main focus is on providing affordable services rather than maximizing profit. This often leads to lower rates for customers, as any surplus revenue is reinvested into the improvement and expansion of services. Public power

also eliminates the need for shareholders and dividends, further reducing costs. Consequently, individuals and businesses can save money on essential utilities, allowing them to allocate their resources more efficiently.”

– Chris

“There are many benefits to public power, such as being able to be provided with economic advantages. IMPA makes sure all electric needs of the community are met, as well. It boosts community investments, supports local education, and gets involved with beautification.”

– Bridgette

These are all great answers that highlight how public power improves your community to help it thrive. Additionally, public power is affordable. According to a 2021 American Public Power Association (APPA) comparison, public power customers of Indiana and Ohio typically saved an average of more than 40% when compared to other types of electric utilities. APPA also reports that nearly 80% of projects currently under construction by public power utilities are solar and wind generating sources. This shows that public power utilities also recognize the importance of environmental stewardship and continue to invest in sustainable power sources.

Public power communities, including yours, consistently work to provide low-cost, reliable, and environmentally-responsible power to their consumers.

To learn more about public power, visit www.impa.com/publicpower!

Indiana Municipal Power Agency
11610 N. College Ave.
Carmel, IN 46032

PRE-SORTED
STANDARD
U.S. Postage
PAID
Indianapolis, IN
Permit # 9555



The Municipal Power News is published
by the Indiana Municipal Power
Agency and the Town of Pittsboro.

IMPA Commissioner: Jason Love

Rebates Available to You!

Did you know that you could earn rebates on qualifying heating, ventilation and air conditioning (HVAC) installations? The IMPA Energy Efficiency Program is offered through your local utility, in partnership with its power supplier, the Indiana Municipal Power Agency (IMPA). It is designed to help consumers save money through reduced energy usage.

Visit www.impa.com/energyefficiency to view a list of current rebates and download an application. For any questions, please contact save@impa.com!

