



## President's Message Diverse portfolio key to energy future

—by Raj G. Rao

The more things change, the more they stay the same. The utility industry has seen a number of changes over the past few years. More recently, the focus on energy has turned to conservation, efficiency, emissions reductions and cleaner generation technologies. Yet at the core of all these changes remains the desire to provide low-cost, reliable and environmentally-responsible power to consumers, businesses and industries.

Earlier this year, Indiana's own Senator Richard Lugar introduced a bill seeking to provide a practical energy plan for utilities that will meet environmental expectations as well. The bill, called the Lugar Practical Energy and Climate Plan, offers measurable goals that will produce monetary, energy and greenhouse gas savings. Most of all, the goals are achievable, providing steps to cleaner generation technologies without overly burdening electric consumers with emissions taxes.

At the core of Senator Lugar's proposal is the need for greater diversity in our domestic energy resources. The bill proposes that by encouraging and guiding investment in domestic power sources and providing short-term incentives for new technologies, jobs will be created, innovation will be supported, and cleaner technologies will be produced. Coupled with research and de-

- continued on page 3

## Streetlights and welcome signs brighten communities

A total of 31 Indiana Municipal Power Agency (IMPA) communities are getting a facelift with the addition of energy efficient streetlights, new community signs or both.

As 2010 came to a close, signs and streetlights began arriving in communities ready for installation. The new streetlights boast energy sav-



*Dunreith's new community sign greets visitors traveling east on U.S. 40.*

ings while the welcome and utility signs show off new looks.

As the new lights go in and the old come out, IMPA is giving solutions to community members on how they can safely dispose of the used lights. If recycling is the community's choice, Lighting Resources LLC, a vendor contracted by IMPA, will aid participants by picking up the lights and handling the rest. Communities also have the options of storing, reusing or selling the lights to other IMPA or public power municipalities.



*Greenfield's streetlights make a switch to energy efficient LED.*

While the streetlights may be a finer detail to notice, communities with new signs will welcome you at the start. Depending on the community, the signs may sit at key entrances or in front of the utility office. Member communities interested in obtaining a sign should contact Susan Reed at (317) 575-3879 or [susan@impa.com](mailto:susan@impa.com). ☺

### Inside

page 2 - Project Watch

page 3 - Legislative Update

page 4 - New building database on website

# Project Watch

## Prarie State Energy Campus

The Prairie State Energy Campus is approximately 57 percent complete. The construction of the Unit 1 boiler is nearing completion and significant progress is being made on Unit 2. Other work on the power block consists of steam turbine generator installation, flue gas ductwork section installation and air quality control system work. At the Lively Grove Mine, construction is 66 percent complete and on schedule. The coal pile base is being formed and the base mine plan has been proven and approved by the Mine Safety and Health Administration. Work on the mine's administrative/service building is now complete. The Jordan Grove disposal site's first cell has been completed and work continues on the rail and unloading facilities. The Baldwin to Rush Island final transmission line is under construction. It has had the Mississippi River crossing conductors pulled and should be completed soon.

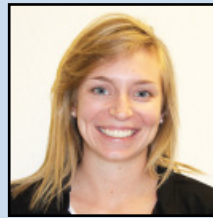


An aerial view of the Prairie State Energy Campus. Photo courtesy of John Whitney, [www.aerialsbywhitney.com](http://www.aerialsbywhitney.com).

## Trimble County Unit 2

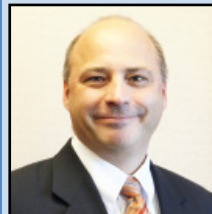
The Trimble County Unit 2 (TC2) project is 99.5 percent complete and is in the commissioning phase. During this phase, the unit has achieved 100 percent of its rated output. TC2 has encountered some equipment problems during the commissioning phase. Replacement and repair work has been done to resolve the problems and the unit is expected to be substantially complete before the end of the year. ☺

## Staff Announcements



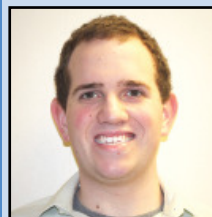
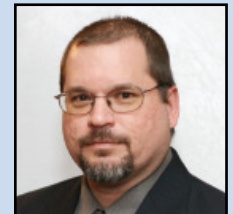
Emily Atwood joins IMPA as the new Staff Writer. She is a graduate of Miami University (Ohio) with a B. A. in Journalism and German.

Kyle Brouillete is the new Electrical Operations Analyst for IMPA. He has a B. S. in Mechanical Engineering from Purdue University.



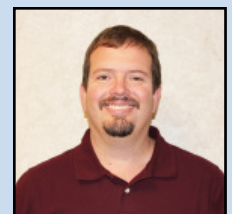
Doug Buresh joins IMPA as the Senior Vice President for Planning and Operations. He was most recently employed as Senior V. P. and co-lead at Ventyx Advisors.

Brian Markley has been promoted to Combustion Turbine Manager. Brian began at IMPA in 2000 as Plant Superintendent, CT Facilities. He recently completed his B. S. from Purdue University in Richmond.



Mike Malguarnera is the new Generation Engineer at IMPA. He is a graduate from Case Western Reserve University with a B. S. in Mechanical Engineering and a minor in Electrical Engineering.

Dan Worl joins IMPA as a Power System Coordinator/Trader. Dan is a graduate of Purdue University and IVY Tech with degrees in Organizational Leadership, Mechanical Engineering Technology and Sustainable Energy. ☺



# Legislative Update:

## Big change in D.C. and Indiana General Assembly

- by Carolyn Wright, Vice President of Government Relations and Member Services, IMPA

At the federal level, the biggest question leading up to the election was whether or not Republicans would muster enough victories to flip the US House of Representatives and possibly even the Senate over to GOP control. Well, flip it they did! Republicans needed to gain 39 seats to recapture that Chamber. They captured at least 63 seats, several of which were held by high ranking Democrat committee chairs, for a total of 242 in the US House of Representatives. Democrats control 193 seats.

In the US Senate, some thought Republicans had a good chance of winning enough Senate seats that even THAT chamber would swing. However, at the end of the day, Republicans have officially succeeded in only 6 of the 10 contests they needed to win. One of those GOP successes was in Indiana, with Dan Coats defeating Democrat Brad Ellsworth. Democrats will retain control, but the margin is much tighter than it was, with the chamber split 53-47.

There will be four new House faces in Indiana's Congressional delegation. The political split will be 6 Republicans and 3 Democrats.

Here is a breakdown of Indiana's new delegation (bold denotes new):

Congressional District 1 –	Pete Visclosky (D)
Congressional District 2 –	Joe Donnelly (D)
<b>Congressional District 3 –</b>	<b>Marlin Stutzman (R)</b>
<b>Congressional District 4 –</b>	<b>Todd Rokita (R)</b>
Congressional District 5 –	Dan Burton (R)

Congressional District 6 –	Mike Pence (R)
Congressional District 7 –	Andre Carson (D)
<b>Congressional District 8 –</b>	<b>Larry Buschon (R)</b>
<b>Congressional District 9 –</b>	<b>Todd Young (R)</b>

In the Indiana General Assembly, Republicans firmly control the State Senate by a 37-13 margin, which is referred to as a quorum-proof super majority (meaning no Democrats are technically needed to conduct business).

In the Indiana House of Representatives, Republicans have gained 12 seats and now have a 60-40 majority in that Chamber. One district appears to have a Republican winner with a margin of a mere 8 votes. (At this writing, a recount was pending.)

Governor Mitch Daniels and the Republicans have complete control of the state legislature, a feat not seen since 2005 and 2006. This next legislative session is a budget writing year, AND it is time for the decennial drawing of new legislative districts. Additional issues of education reform and addressing local government matters will make this one of the most challenging sessions in history.

As Public Power entities, we have our work cut out for us with both our Congressional delegation and with the Indiana General Assembly. I know we are all up to the task! As always, feel free to give me a call if you have any questions or would like more information on specific election items. My number is 317-575-3873, or email me at [cwright@impa.com](mailto:cwright@impa.com). ☺

## President's Message

- continued from page 1

velopment is the retirement of the most costly conventional older coal plants, done on a timeline that makes sense for maintaining low electric rates to customers, to reduce emissions. While it may not be the ultimate answer, the bill provides a workable plan allowing states and utilities to determine the energy mix that makes the most sense for them and their customers. That is the key to a successful energy future – a diverse portfolio that addresses the needs of utilities, consumers and the environment alike.

As the need for efficient, clean energy grows stronger, and regulations become stricter, utilities must continually adjust to meet changing standards. Yet the end goal of low-cost, reliable energy must not be forgotten. As things continue to change, IMPA continues to operate under the same philosophy of providing a low-cost, reliable and environmentally-responsible power supply using a diversified portfolio. The more things change, the more they stay the same. ☺

# IMPA offers robust building database to website

In the Fall of 2010, IMPA added a new site and building database to its website. Easy to find at <http://impa.zoomprospector.com>, the page highlights sites, buildings and sophisticated community data for all of IMPA's communities.

Community profiles, which report up-to-date information like population size, labor force, transportation assets and income levels, are also available for customization of any IMPA community. This type of detailed demographic information is new to the IMPA website, which is helpful to decision makers on economic development projects as well as local elected officials looking for overall perspectives on their municipalities.

Additionally, the IMPA website will be

continuously and automatically updated with current statistics if there is any need for demographic information when trying to access state or federal funds.

The database is a part of GIS Planning's Zoomprospector.com (GIS System). In early 2010, the Indiana Economic Development Corporation's (IEDC) new site and building database, based on the GIS system, went online. IMPA's version is built around the state database and their strengths, but IMPA's website specifically highlights the IMPA member communities.

By linking this website to community and local economic development pages, it can help a project decision maker learn more about IMPA communities.

If you would like a tutorial on how to use the IMPA site and building database, please contact Susan Reed at [susan@impa.com](mailto:susan@impa.com) or (317) 575-3879.

Printed on recycled stock



[www.impa.com](http://www.impa.com)

[niki@impa.com](mailto:niki@impa.com)

(317) 573-9955

Carmel, IN 46032

11610 N. College Ave.

Indiana Municipal Power Agency

Niki Dick · IMPA Wire  
Send submissions and suggestions to:

Raj G. Rao, President

Michael E. Martin, Chairman

The IMPA Wire is published by the  
Indiana Municipal Power Agency

11610 N. College Ave.  
Carmel, Indiana 46032

