



AMI Program Gains Momentum

A little over a year ago, IMPA's engineering and operations subsidiary, IMPA Service Corp, launched its new Automated Metering Infrastructure (AMI) initiative, created to give IMPA members better and more affordable access to the latest technology in metering. The program provides a cost-sharing opportunity for members, where the price of the AMI software, server hosting, startup training, system monitoring, customer usage data, and more are distributed between all participants. This socialized method of costs drastically reduces the total that the participating member would have to put up front if they were to pursue AMI independently.

Since the program debuted in December of 2019, nine IMPA members have signed contracts to implement IMPA Service Corp's AMI into their community. By early February, the communities of Advance, Bargersville, Coatesville, Frankton, Greenfield, Knightstown, Lewisville, Tipton, and Blanchester, OH were officially partaking in the

- continued on page 2

IMPA Maintains Diverse Power Portfolio



The Crawfordsville 5 Solar Park contributes 9.8 megawatts of solar capacity to IMPA's power supply portfolio.

Providing low-cost, reliable, and environmentally responsible power requires having a robust power supply portfolio that can endure fluctuations in fuel supply and cost. While the Indiana Municipal Power Agency (IMPA) began operations in 1983 with zero assets, the Agency has continuously made wise investment decisions in generation resources to build a diverse power supply portfolio that will stand the test of time. Now, with over \$2 billion of assets, IMPA is able to provide excellent service, reliability, and stable rates due to this diversity.

- continued on page 2

Inside

page 2 - Follow IMPA on Social Media!

page 3 - IMPA Maintains a Diverse Power Portfolio

page 4 - New EV Charging Stations at IMPA

Follow IMPA On Social Media



Indiana Municipal Power Agency



@impapower



@ImpaPower



Indiana Municipal Power Agency

IMPA Maintains Diverse Power Portfolio

- continued from page 1

IMPA's portfolio of generation resources includes a mixture of coal, natural gas, nuclear, renewable, and power purchase contracts to supply electricity to its members. The variety of IMPA's investment in fuel types allows the Agency to avoid the mistake of "putting all its eggs in one basket." IMPA also spreads its generation resources over a geographically large footprint. The diversity in the physical location of power generation facilities ensures that unanticipated events, such as large natural disasters, wouldn't take all power supply resources out of commission at one time.

"We need to withstand changing market prices, fuel uncertainty, regulation changes, and extreme weather events," said Frank Smardo, IMPA's Executive Vice President of Energy Solutions.

- continued on page 3

AMI Program Gains Momentum

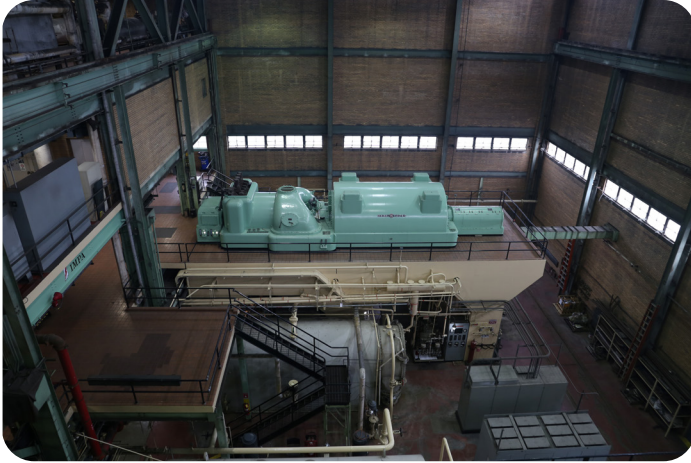
- continued from page 1

opportunity. IMPA anticipates full integration of AMI into each of these communities by the end of this year. The Agency has already installed 20,000 meters and has 37,000 currently under contract.

"The AMI program was designed to utilize economies of scale to help IMPA communities update their electric infrastructure while also minimizing costs," said IMPA President and CEO Raj Rao. "We are thrilled to see many of our members taking interest in the initiative. Once AMI is integrated into their local infrastructure, they will be able to provide even greater customer service and reliability to residents and businesses in their service area."

Many other IMPA members have expressed interest in the AMI program and are working with IMPA staff to determine if participating is right for their community. With interest in the program increasing all around the state of Indiana, IMPA is confident that the successful initiative will only continue to grow.

The success of IMPA Service Corp's AMI program marks another way in which IMPA has expanded upon its services to better support member communities. Over the years, the Agency has gone from simply supplying wholesale power to also offering operations and engineering services, economic development incentives, marketing assistance, and more. Thanks to the strength of public power, IMPA continues to provide and expand its variety of valuable services to assist public power communities. *W*



White Water Valley Station's coal-fired units generate power for IMPA members during peak load periods.

market prices of energy, which manifests in more stable wholesale electric rates. Consequently, the growth of IMPA's investments and diversity directly lend to the Agency's competitive power supply. With a strong power supply portfolio built off decades of hard work and keen strategy, IMPA will be able to provide its essential services to all 61 members for decades to come. Many thanks to Manager of Planning, John Bott; Vice President of Planning & Rates, Larry Brown; and the rest of IMPA's planning and operations team for their long-term planning and development of IMPA's portfolio. *W*

- continued from page 2

“Diversification is our best asset to ensure longevity no matter the situation.”

Over the last 38 years, IMPA has embraced the challenge of maintaining this diversity and acquired a wide array of power resources. IMPA continues to further expand its diverse portfolio by investing in its solar program, building more and more renewable generation facilities in Indiana communities each year. Through power purchase contracts, IMPA recently negotiated a 15-year purchase agreement with Enel Green Power for 75 MW of wind generation being constructed in Illinois. IMPA has also invested in a solar project with Capital Dynamics and Tenaska to incorporate more solar into the Agency's power purchase agreements in 2022.

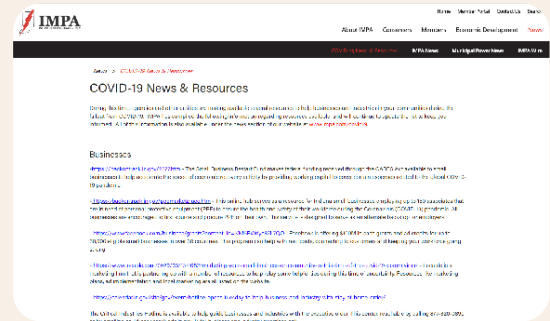
While IMPA's solar program and renewable power purchase agreements provide valuable energy to our power supply portfolio, coal-fired and natural gas generation still play a role in ensuring steady, reliable power that is not subject to wind, weather, or time of day. It is for this exact reason that IMPA continues to strike a balance between renewables, coal-fired, and natural gas resources. The workers at these facilities protect the reliability of IMPA's power supply during the coldest and hottest months of the year—precisely when our members need it most.

By owning such a large, variable amount of power resources, IMPA has more control over its own operations and relies less on the fluctuating



IMPA wholly-owns seven combustion turbines that generate electricity using natural gas, such as this one in Anderson.

COVID-19 Resources



IMPA is committed to supporting member communities through the COVID-19 pandemic. To access a list of resources that the Agency has compiled for assistance through COVID-19, please visit www.impa.com/covid19.



11610 N. College Ave.
Carmel, Indiana 46032

The IMPA Wire is published by the
Indiana Municipal Power Agency

Phillip Goode, Chairman

Raj G. Rao, President

Send submissions and suggestions to:

Whitney Hicks · IMPA Wire
Indiana Municipal Power Agency
11610 N. College Ave.
Carmel, IN 46032
(317) 573-9955
whitneyh@impa.com

www.impa.com



Printed on recycled stock

New EV Chargers at IMPA

In 2018, the Indiana Municipal Power Agency became an early adopter of budding Electric Vehicle technologies by installing a Level 2 and Level 3 charging station next to its headquarters and adding an EV to the company's fleet. Over the last three years, IMPA has watched the technology continue to advance at a rapid pace, with automakers like Ford, Chevrolet, Volkswagen, and Tesla developing more dependable and affordable EVs. To keep up with the increase of EVs on the road, IMPA just installed several more Level 2 Tesla destination charging stations in December of last year for IMPA guests to use while visiting the Agency's facilities.

Though much of the future regarding the automobile industry will likely involve uncharted territory, IMPA is looking forward to watching and participating in the continued advancements in EV technology. The Agency remains dedicated to educating members with up-to-date information surrounding the topic and tracking the possibilities of tomorrow. *W*

