

Municipal Power News



Lewisville Municipal Utilities

Volume 28, Issue 2 | Fall 2023



Prairie State Generating Campus Welcomes Guests

This May, community leaders from several municipal utilities in Henry County traveled to southern Illinois to tour the Prairie State Generating Campus (PSGC), a state-of-the-art energy campus that produces reliable, non-intermittent electricity for towns like Lewisville. These leaders traveled with officials from the Indiana Municipal Power Agency (IMPA), Lewisville's wholesale power provider, who hosted the trip for member communities. IMPA holds a 12.64% undivided ownership interest in PSGC, contributing about 200 megawatts to the Agency's power supply portfolio. PSGC is a vital component of IMPA's diverse power portfolio, which provides the electricity that powers homes and businesses in the Agency's 61 member communities throughout the in Indiana and Ohio, including Lewisville. The PSGC campus uses coal as a fuel supply, featuring a pulverized coal-fired generating station and an adjacent underground coal mine that is expected to supply all fuel for PSGC three decades out from its initial date of operation.

PSGC is unique in several ways, one of which is that it is entirely owned by public

-continued on page 4

Inside this Issue

Page 2

40 Years of IMPA

The Indiana Municipal Power Agency celebrates four decades of operation.

Page 4

Tidbits and Trivia

Give your answer for a chance to win a prize from IMPA!

Page 7

What are the Benefits of Electric Vehicles?

See how readers of the newsletter responded to this question.

40 Years of the Indiana Municipal Power Agency



The Indiana Municipal Power Agency (IMPA) began with a single idea to enable municipally-owned utilities to join and share power resources for a more reliable and cost-effective future. Before the formation of the Agency, individual municipal utilities in Indiana only had limited access to power supply options, and their small size kept them vulnerable to the changing energy market. However, the founders of IMPA believed in the adage of “strength in numbers,” and sought to withstand these challenges by working together. In 1979, representatives of 11 Indiana municipally-owned utilities organized themselves into a Joint Action Committee to investigate the feasibility of uniting into a joint action agency, which would allow them to share generation resources and bulk purchase power at a mutually beneficial low cost.

By 1980, Indiana state legislation was passed allowing the 11 representative communities to unite in the purchase of

wholesale electric power and transmission services, as well as issue bonds to pay for the cost of projects. This allowed the formation of the Indiana Municipal Power Agency, which had its first operating year in 1983—40 years ago.

In four decades, IMPA has been through a vast number of changes, but has always remained true to its strong founding mission of providing a low-cost, reliable, and environmentally-responsible power supply to its members. Through the years, the Agency’s membership has grown from 11 Hoosier communities to 61 towns, cities, and villages in Indiana and Ohio. The Agency has also grown to offer services beyond power supply, including economic development assistance, marketing and communications support, and government relations work. IMPA also formed its operations and engineering subsidiary—IMPA Service Corp—in 2001 to provide a cost-effective resource for members regarding engineering work, rate studies, and electric system management. These services continue to strengthen IMPA’s membership for the betterment of public power utility customers across the Midwest.

IMPA initially began in 1983 with 24.95% ownership in a coal-fired baseload generating facility called Gibson 5 in southwestern Indiana. As the Agency’s membership grew throughout the decades, IMPA would come to acquire additional power supply resources to support its



Some of the founders of IMPA

members and incorporate diverse fuel types into its portfolio. By 2023, IMPA has added seven combustion turbines operated primarily on natural gas, four with fuel oil backup for reliability, to its resources, as well as joint-ownership in other coal-fired power plants in Kentucky and Illinois. The Agency has also incorporated power purchase agreements of nuclear, wind, and solar power into its power supply portfolio.

Since 2014, IMPA has also developed its own solar power program—constructing 44 solar parks in member communities throughout Indiana. This solar park initiative has played an integral role in building the renewable portion of IMPA’s portfolio and diversifying resources to the benefit of all members. Moving forward, IMPA is working toward a projected energy portfolio made up of 46% no-carbon resources by 2026. As environmental regulations continually change, and as older generation units near their end-of-life expectancy, the shift is a necessity for the Agency’s future success.

Forty years ago, the founders of IMPA provided the building blocks for a resilient foundation, and this foundation remains strong. IMPA as an Agency today has truly been formed by its history — the visionaries



that created the Agency, the decisions that shaped the Agency’s operations, and the evolution of IMPA’s service and power supply over time. As the Agency embarks on its next 40 years of existence, IMPA will continue to write its own story and history as the Agency adapts for future generations. •

IMPA Adds 75 MW of Wind Power

This June, Alta Farms wind farm in DeWitt County, Illinois, announced it began operations to produce renewable wind power. IMPA previously signed a power purchase agreement with the wind farm’s developer, Enel North America, for 75 megawatts of power, which has

now been added to the Agency’s power supply portfolio.

IMPA continues to build upon its historic foundation with wise investments in the Agency’s power supply portfolio, ensuring that its members will always have their everchanging electric needs met.

Tidbits & Trivia

The **Indiana Municipal Power Agency** (IMPA) is a not-for-profit organization that provides a low-cost, reliable, and environmentally-responsible power supply to its members. IMPA provides this wholesale power to 61 communities in Indiana and Ohio, who collectively make up the Agency's membership.

What are some of the benefits of solar energy?



Send your answer to newsletter@impa.com, along with your name, e-mail address, and address for a chance to win an energy efficiency prize pack!

Reader Survey

Is there more about your community that you would like to know? Do you have questions about how public power or your municipally-owned utility works? Would you like to learn more tips and tricks as to how you can improve your home's energy efficiency?

Reach out to newsletter@impa.com to suggest topics for future *Municipal Power News* newsletters and let us know what articles you enjoy most, and what you'd like to see next!



PSGC Welcomes Guests

-continued from page 1

power agencies. Since its construction in 2012, IMPA has been one of nine agencies invested in the campus, all of which share the same commitment to efficient and reliable energy. Public power utilities are not-for-profit entities run as a local division of government, similar to public schools and libraries. This means that the operations of PSGC are in the hands of the public, as generation decisions are made by appointed leaders of the communities served by the campus. As a result, the IMPA group that traveled to PSGC was welcomed as owners of the facility.

The visiting group was composed of members of several IMPA communities, including Middletown, Knightstown, and Lewisville, as well as Agency staff. Attendees



were escorted through the areas around the supercritical designed boiler units of the coal-fired power plant as well as the coal mine, located over 200 feet underground. While touring PSGC, the IMPA group was educated on the daily operations of the facility with a large focus on its safety culture and reliability. PSGC employees emphasized that the energy campus is among the cleanest coal plants in the United States, with advanced environmental

control technologies. These controls include low NOx burner controls, dry electrostatic precipitators, wet flue gas desulfurization, and wet electrostatic precipitators, among others. Altogether, about \$1 billion has been invested in environmental controls at PSGC so that the campus may continue providing 2.5 million families with electricity while maintaining clean coal standards. Lewisville is just one of 180 communities across the Midwest and Mid-Atlantic to receive power generated at PSGC.

“Our visit to Prairie State was so informative and interesting,” said Jayana Posey, Lewisville’s Clerk-Treasurer and IMPA Commissioner who participated in the trip. “We were given so much information about the plant, how it operates, and all of the ways that they stay cost-effective and efficient. I am amazed at what the employees do there and the outstanding service that they’re providing to all of the communities that receive power from their facility.”

IMPA is proud to be a partial owner of such an exceptional energy campus, and Lewisville officials know that they can rely on the facility’s dependable power supply. Wise investments into top-notch generation plants like PSGC ensure that IMPA members like Lewisville have a bright future. •

What’s the Word?

Circuit Breaker

A circuit breaker is a safety device typically used in homes to interrupt the flow of electricity whenever the current level gets too high. These devices are vital in preventing house fires or other electrical hazards caused by wiring problems or equipment failures.

Typically, homes have a circuit breaker panel, which acts as the control system for the electricity in a house. Here, you can use switch controls to alter the distribution of power around your home.

While circuit breaker panels are intentionally built for easy access and use, always call a professional if you need breaker modifications, or if you are in doubt about anything. It’s always best to prioritize safety when it comes to electricity!

For a chance to be featured in the newsletter and win a prize, send your recipe to:

MPN Recipes
11610 N. College Ave.
Carmel, IN 46032
or
newsletter@impa.com

The MUNICIPAL POWER NEWS is a periodic publication of the Indiana Municipal Power Agency and the 61 communities that it serves with wholesale power.

Editor: Niki Dick
Senior Director of
Marketing Communications

Correspondent:
Whitney Hicks
Communications
Coordinator

MEMBERS

Advance
Anderson
Argos
Bainbridge
Bargersville
Blanchester, OH
Bremen
Brooklyn
Brookston
Centerville
Chalmers
Coatesville
Columbia City

Covington
Crawfordsville
Darlington
Dublin
Dunreith
Edinburgh
Etna Green
Flora
Frankfort
Frankton
Gas City
Greendale
Greenfield

Huntingburg
Jamestown
Jasper
Kingsford Heights
Knightstown
Ladoga
Lawrenceburg
Lebanon
Lewisville
Linton
Middletown
Montezuma
New Ross

Paoli
Pendleton
Peru
Pittsboro
Rensselaer
Richmond
Rising Sun
Rockville
Scottsburg
South Whitley
Spiceland
Straughn
Tell City

Thorntown
Tipton
Troy
Veedersburg
Walkerton
Washington
Waynetown
Williamsport
Winamac

Cooking Corner

Darlington High School Pizza Burgers

Recipe submitted by Martha of New Ross, Indiana

- 1 lb hamburger
- 1/2 lb bologna
- 1 1/2 cups pizza sauce
- Italian seasoning to taste
- Salt and Pepper
- 1/2 tsp garlic powder
- 4-8 oz pizza cheese
- 1 dozen hamburger buns

Mix hamburger and bologna. Chop bologna in food processor. Brown until hamburger is no longer pink. Add salt, pepper, garlic, and italian seasoning. Stir in pizza sauce. Should not be too wet. Let cool slightly. Add cheese and spoon onto half of a bun. Bake 350 until hot. May add more cheese on top. Makes 2 dozen.

Apple Dumplings

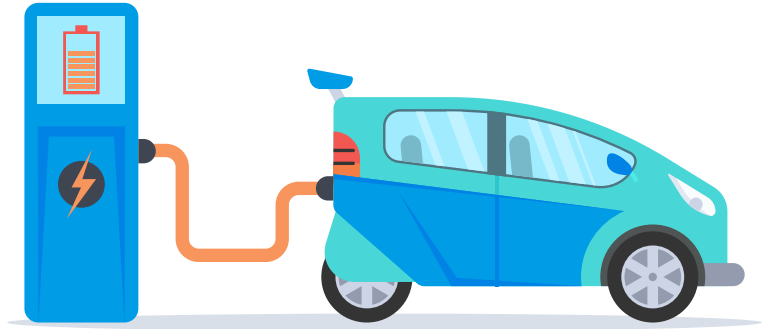
Recipe submitted by Jamie of Linton, Indiana

- 2 cans crescent rolls
- 2 large Granny Smith apples
- 1 1/2 sticks butter
- 1 1/2 cups sugar
- 1 tsp cinnamon
- 1 cup Mountain Dew

Cut apples into 8 slices each and wrap each slice into a crescent roll. Mix butter, sugar and cinnamon; bring to a boil then spoon over rolls. Pour on Mountain Dew next. Some people will add the Mountain Dew in with the butter, sugar and cinnamon. Bring to a boil. Bake at 350 degrees for 45 minutes.

The Benefits of Electric Vehicles

In the last issue of the Municipal Power News, we asked readers to share some of the advantages of driving an electric car rather than a traditional gas powered vehicle. We received a number of great comments from our readers—check out what some of you said!



“One significant benefit of driving an electric vehicle (EV) over a gas-powered car is the cost savings associated with fuel and maintenance. Electric vehicles are more energy-efficient, allowing drivers to cover more miles per unit of energy compared to internal combustion engine vehicles. With electricity generally being cheaper than gasoline, EV owners can save significantly on fuel costs over time. Furthermore, electric vehicles have fewer moving parts and require less frequent maintenance. They don’t need oil changes, spark plug replacements, or timing belt adjustments, reducing ongoing maintenance expenses. This combination of lower fuel costs and reduced maintenance requirements makes electric vehicles a cost-effective choice for environmentally conscious drivers.” – Mario, Richmond

Spot on answer! The energy efficiency of EVs, as well as their low maintenance needs, make these vehicles remarkably safe and dependable. Like Mario, many of our other readers mentioned the environmental benefits of EVs:

“A benefit of driving an electric car is zero tailpipe emissions.” – Sue, Bremen

“Electric vehicles are better for the environment by having a lesser carbon footprint.” – Todd, Winamac

“Lower carbon footprint.” – Charlie, Bainbridge

This is also a great observation—No power source is completely benign environmentally. While the mining and production of the battery components causes emissions, EVs may have an edge when considering lifetime emissions of EVs versus conventional gas powered cars. As renewable energy generation becomes more popular, the electricity that fuels EVs is also becoming cleaner. This reduction in emissions improves the air quality of your community and supports renewable resource integration.

The popularity of electric vehicles steadily rises as consumers learn about the numerous benefits that they provide as compared to gas powered cars. While EVs may not be for everyone, their use is expected to grow in the coming decade. As a member of a public power utility, EVs also benefit your entire community as their fuel supply comes from your local utility. The energy purchased to charge an electric vehicle helps to support infrastructure upgrades, hometown jobs, and steady electric rates that are provided by public power utilities. Next time you’re in the market for a new vehicle, consider going electric!

Indiana Municipal Power Agency
11610 N. College Ave.
Carmel, IN 46032

PRE-SORTED
STANDARD
U.S. Postage
PAID
Indianapolis, IN
Permit # 9555

The Municipal Power News is published
by the Indiana Municipal Power
Agency and the Lewisville Municipal
Utilities.

IMPA Commissioner: Jayana Posey

Lewisville Brush Pickup

If you are a resident of Lewisville, the town will provide a brush pickup to you free of charge. Please be sure that the brush is located in a pile on the edge of your property so that it is easily accessible to our town employee. Due to ongoing construction, if you live on Main Street, please do not put piles of brush on US 40. Please also do not include large tree limbs or leaves. Thank you! •

