

Municipal Power News



Gas City Municipal Utilities

Volume 29, Issue 1 | Winter 2024



Gas City in Path of 2024 Solar Eclipse

Mark your calendars for an important date this spring! On the afternoon of April 8, Gas City will be in the path of totality for the 2024 solar eclipse across North America. While millions of tourists from across the world are anticipated to visit the state to take part in the event, Gas City residents are poised to witness the rare occurrence from the comfort of their own back yards.

A complete solar eclipse happens when the moon passes between the Sun and the Earth at an angle that completely blocks the face of the Sun from viewers on Earth. Partial solar eclipses, where the moon only covers a portion of the Sun's face, occur about twice a year in different parts of the world, with Indiana having its most recent partial eclipse in October of 2023. However, total solar eclipses are more rare, happening about once every 1.5 years. While that may sound relatively frequent, a solar eclipse crosses any one point on the Earth's surface only once in every 375 years approximately.

Not only are total solar eclipses rare to experience, but they are also a unique cosmic event. Out of all the moons and planets in our solar system, Earth is the only planet that even experiences total solar eclipses. According to the American Astronomical Society, though

-continued on page 4

Inside this Issue

Page 2

10 Years of Solar Power

IMPA celebrates a decade of its solar program.

Page 4

Reader Feedback

Respond to the question featured on this page for a chance to win a prize!

Page 7

The Benefits of Public Power

Look through reader responses from the last edition of *Municipal Power News*.

IMPA Celebrates 10 Years of its Solar Program

With the goal to expand the diversity of its power supply portfolio with economically feasible renewable generation sites, the Indiana Municipal Power Agency (IMPA) launched its solar program to construct solar parks within its member communities in 2014. At the time, solar power was just emerging as a cost-effective fuel resource for utilities, but IMPA embraced the challenge of incorporating this resource into its power supply portfolio to further diversify its resources and prepare for the future. Now, 10 years and 50 solar parks later, IMPA is proud of the numerous accomplishments made through its solar program and the nearly 200 megawatts of power that it contributes to all 61 member communities served by the Agency.



IMPA began its program cautiously, only constructing three demonstration solar parks in Frankton, Rensselaer, and Richmond, Indiana in its first year. Each site was housed on about eight acres of land and with 4,000 solar panels, and by the end of the year, the three sites generated 1.5 million kilowatt hours.

Through this process, IMPA expanded its knowledge of solar power and the steps needed to successfully develop parks of this scale in the most cost-effective way possible. Besides relying on in-house expertise, IMPA worked with local contractors in each of the three member communities to keep costs down and support local businesses. When construction of the three solar parks came in under budget while reliably providing environmentally-responsible electricity, IMPA and its Board of Commissioners started to envision the vast possibilities of building solar in several member communities. A spark was lit, and by 2015, six more solar parks were constructed in member communities, adding over 9 megawatts (MW) of solar capacity to the Agency's power supply portfolio.

In the ensuing years, IMPA increased its renewable footprint by building solar in collaboration with its member communities. As time progressed, so did the Agency's proficiency in constructing solar parks. By 2017, IMPA was constructing each of its solar parks with a single-axis



tracking system, allowing solar panels at each site to effectively track the movement of the sun throughout the day and generate more electricity as a result. The program continued to expand with new solar parks being constructed in member communities throughout the state, as well as additional parks being added to some communities whose infrastructure were able to handle more than one solar park . With the help of this program, IMPA achieved at least 30% low or no carbon resources by 2020 while still offering some of the lowest wholesale electric rates in the state of Indiana.

The success of IMPA’s solar program continues to thrive in recent years. In 2023, IMPA had its most prolific year yet for its solar park program as the Agency brought seven solar parks online in member communities. The agency’s largest park – at 9.9 MW – was completed, and IMPA celebrated a milestone as the Agency’s 50th solar park came online late in the year. From a small, idealistic program that started with three, 1-MW parks in 2014,

the Agency’s solar park program has grown exponentially in under 10 years. The Agency now has over 196 MW of solar power in member communities. Plans are already underway for four additional parks, and the Agency expects to surpass 209 MW of solar capacity by the end of 2025. The solar park program plays a key role in IMPA’s diverse power supply portfolio, and with its proven success rate, the Agency continues to provide a diverse fuel mix that benefits both consumers and the environment. •



IMPA’s 50th Solar Park Ribbon Cutting

Reader Feedback

The **Indiana Municipal Power Agency** (IMPA) is a not-for-profit organization that provides a low-cost, reliable, and environmentally-responsible power supply to its members. IMPA provides this wholesale power to 61 communities in Indiana and Ohio, who collectively make up the Agency's membership.

What does having reliable electricity mean to you and your family?



Send your answer to newsletter@impa.com, along with your name, e-mail address, and address for a chance to win an energy efficiency prize pack!

Topic Survey

Is there more about your community that you would like to know? Do you have questions about how public power or your municipally-owned utility works? Would you like to learn more tips and tricks as to how you can improve your home's energy efficiency?

Reach out to newsletter@impa.com to suggest topics for future *Municipal Power News* newsletters and let us know what articles you enjoy most, and what you'd like to see next!



2024 Solar Eclipse

-continued from page 1

there are more than 200 moons orbiting six planets in our solar system, our moon is the only one that is perfectly sized and distanced from its planet to block the sun's face.

It's been since the year 1869 that anywhere in Indiana was in the path of totality, so the event is cause for much celebration. And Hoosiers won't be the only ones celebrating. Each time a total solar eclipse occurs on Earth, tourists, ranging from photographers to astronomers, journalists, new age spiritualists, and alien enthusiasts, travel far and wide to participate in the event. Indiana's tourism industry can expect a significant boost this spring because of the millions that are expected to flood the state in anticipation of the eclipse.

Though residents in Gas City won't have to prepare much with the path of totality directly passing through the city, be sure that you keep a few things in mind to be ready for



Follow IMPA on Social Media!



Indiana Municipal Power Agency



@impapower



@ImpaPower



Indiana Municipal Power Agency

the solar eclipse. The event is expected to last for approximately 2 minutes and 40 seconds in Gas City, so it's important to be aware of timing. The beginning of totality will start around 3:06pm on April 8, darkening the sky enough to feel as though it's about dusk. During the eclipse, you can expect to hear birds and insects chirping, and some of the brighter stars and planets in the sky may even become visible! The magic of the moment is

said to be indescribable, so keep an eye on your clock that day and don't miss out.

Most importantly, prepare to keep you and your loved ones safe while viewing the total solar eclipse. Just like any other day, it is incredibly dangerous to look at the sun, so special eyewear is required to enjoy the eclipse. Eclipse glasses, which can be purchased from a variety of retailers online and in stores, are appropriate for

-continued on page 8

What's the Word?

Investigating Power Terminology

Watt

A watt is a unit of measurement used to show the rate of energy transfer over one second of time. Consequently, a kilowatt is equal to 1,000 watts, a megawatt is 1 million watts, and a gigawatt equals 1 billion watts.

You may have heard of a kilowatt hour (kWh), which is a common billing unit used by most utilities in the electric industry. Essentially, a kWh simply shows the energy use per hour of an appliance, device, or entire home measured in kilowatts. For example, a space heater rated at 1.5 kWh consumes 1500 watts of power in one hour of continuous use!

Watts are named after James Watt, an inventor and engineer born in 1736 who also created the concept of horsepower.

Cooking Corner

Meatloaf

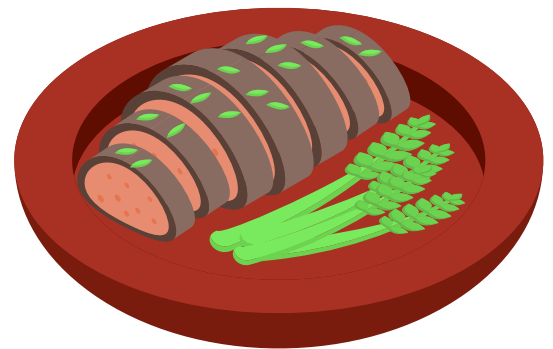
Recipe submitted by Marcie of Richmond, Indiana

- 2 lbs hamburger
- 2 eggs
- 10 to 12 crackers (crumbled)
- 1 onion diced
- 1 tsp baking soda
- 1/2 cup milk
- 2 pkgs instant oatmeal
- 2 to 3 squirts of ketchup

Mix all ingredients well. Form into a loaf and put into a greased loaf pan. Cover with ketchup. Refrigerate for 20 to 30 minutes covered to help the loaf firm up. Preheat oven to 350 degrees. Remove loaf from refrigerator and bake in preheated oven for 1 to 1 1/2 hours.

Once meatloaf is baked, remove from oven. Let rest on top of the stove for 30 minutes before cutting into so that it won't fall apart.

This recipe serves about 4 to 6 people. Invite your friends and family over to enjoy!



For a chance to be featured in the newsletter and win a prize, send your recipe to:

MPN Recipes
11610 N. College Ave.
Carmel, IN 46032
or
newsletter@impa.com

The MUNICIPAL POWER NEWS is a periodic publication of the Indiana Municipal Power Agency and the 61 communities that it serves with wholesale power.

Editor: Niki Dick
Senior Director of Marketing Communications

Correspondent:
Whitney Hicks
Communications Coordinator

MEMBERS

Advance
Anderson
Argos
Bainbridge
Bargersville
Blanchester, OH
Bremen
Brooklyn
Brookston
Centerville
Chalmers
Coatesville
Columbia City

Covington
Crawfordsville
Darlington
Dublin
Dunreith
Edinburgh
Etna Green
Flora
Frankfort
Frankton
Gas City
Greendale
Greenfield

Huntingburg
Jamestown
Jasper
Kingsford Heights
Knightstown
Ladoga
Lawrenceburg
Lebanon
Lewisville
Linton
Middletown
Montezuma
New Ross

Paoli
Pendleton
Peru
Pittsboro
Rensselaer
Richmond
Rising Sun
Rockville
Scottsburg
South Whitley
Spiceland
Straughn
Tell City

Thorntown
Tipton
Troy
Veedersburg
Walkerton
Washington
Waynetown
Williamsport
Winamac

What are the Benefits of Public Power?

In the last issue of the *Municipal Power News*, we asked you what some of the benefits of public power are. As a reader of this newsletter, you live in a public power community, which means the electric utility that serves your power needs is a not-for-profit utility, owned and operated by your municipality.

The benefits of public power are numerous. Here is what some of our readers had to say about the advantages of living in a public power community.

“By being a part of the community, public power utilities can boost investment in the community, support local education, and be involved with charitable programs. They also care about the overall well-being of the communities they serve.”

– Fred

“Since public utilities are nonprofit organizations, their main focus is on providing affordable services rather than maximizing profit. This often leads to lower rates for customers, as any surplus revenue is reinvested into the improvement and expansion of services. Public power

also eliminates the need for shareholders and dividends, further reducing costs. Consequently, individuals and businesses can save money on essential utilities, allowing them to allocate their resources more efficiently.”

– Chris

“There are many benefits to public power, such as being able to be provided with economic advantages. IMPA makes sure all electric needs of the community are met, as well. It boosts community investments, supports local education, and gets involved with beautification.”

– Bridgette

These are all great answers that highlight how public power improves your community to help it thrive. Additionally, public power is affordable. According to a 2021 American Public Power Association (APPA) comparison, public power customers of Indiana and Ohio typically saved an average of more than 40% when compared to other types of electric utilities. APPA also reports that nearly 80% of projects currently under construction by public power utilities are solar and wind generating sources. This shows that public power utilities also recognize the importance of environmental stewardship and continue to invest in sustainable power sources.

Public power communities, including yours, consistently work to provide low-cost, reliable, and environmentally-responsible power to their consumers.

To learn more about public power, visit www.impa.com/publicpower!

Indiana Municipal Power Agency
11610 N. College Ave.
Carmel, IN 46032

PRE-SORTED
STANDARD
U.S. Postage
PAID
Indianapolis, IN
Permit # 563

The *Municipal Power News* is published by
the Indiana Municipal Power Agency and
Gas City Municipal Utilities.

IMPA Commissioner: Dick Justice

2024 Solar Eclipse

-continued from page 5

safe viewing of the event. Additionally, it is recommended to purchase eclipse glasses that are recognized as trustworthy by the American Astronomical Society (AAS). A list of reliable vendors can be found on the AAS's website at <https://eclipse.aas.org/resources/solar-filters>.

Take a look at some of these additional tips to remember when you enjoy the solar eclipse this April:

- Inspect your eclipse glasses to ensure there are no scratches, rips, or damage.
- Never look at the sun through a camera or telescope, even with eclipse glasses on.
- Only when the moon completely obscures the sun during the eclipse are you able to remove your eclipse glasses to view the event. As soon as the sun begins to reappear, put your safety glasses on immediately. •

