

# Municipal Power News



Dublin Municipal Electric and Water  
Volume 29, Issue 1 | Spring 2024



Photos from Dublin  
Community Club's Facebook Page

## A Beacon of Support: Dublin Community Club

For small towns like Dublin, fostering a sense of connection and belonging is key to the quality of life in town. Since 1955, Dublin Community Club has worked toward this goal by providing a safe space for families and friends to skate, dance, and engage with others in town. For nearly 70 years, the organization has been a cornerstone of the town, supporting and shaping Dublin's culture and connectivity. With recent grant funding, a packed event schedule, and a newly established digital presence, the club shows no signs of slowing, either.

Many in the community know Dublin Community Club for the several events they host throughout the year, including recent celebrations like their Easter Egg Hunt, Dodgeball Tournaments, and St. Jude Skate-a-thon, in which all proceeds were donated to the children's hospital. The facility also offers ample space for private events and outdoor community green space for all age groups, including a playground and basketball court. This provides families throughout all of Wayne County with safe recreation grounds for play and fresh air in the warmer months. Through their fundraising efforts, provided services, and consistent voice of positivity

-continued on page 4

## Inside this Issue

### Page 2

#### *10 Years of Solar Power*

IMPA celebrates a decade of its solar program.

### Page 4

#### *Reader Feedback*

Respond to the question featured on this page for a chance to win a prize!

### Page 7

#### *The Benefits of Public Power*

Look through reader responses from the last edition of *Municipal Power News*.

# IMPA Celebrates 10 Years of its Solar Program

With the goal to expand the diversity of its power supply portfolio with economically feasible renewable generation sites, the Indiana Municipal Power Agency (IMPA) launched its solar program to construct solar parks within its member communities in 2014. At the time, solar power was just emerging as a cost-effective fuel resource for utilities, but IMPA embraced the challenge of incorporating this resource into its power supply portfolio to further diversify its resources and prepare for the future. Now, 10 years and 50 solar parks later, IMPA is proud of the numerous accomplishments made through its solar program and the nearly 200 megawatts of power that it contributes to all 61 member communities served by the Agency.



IMPA began its program cautiously, only constructing three demonstration solar parks in Frankton, Rensselaer, and Richmond, Indiana in its first year. Each site was housed on about eight acres of land and with 4,000 solar panels, and by the end of the year, the three sites generated 1.5 million kilowatt hours.

Through this process, IMPA expanded its knowledge of solar power and the steps needed to successfully develop parks of this scale in the most cost-effective way possible. Besides relying on in-house expertise, IMPA worked with local contractors in each of the three member communities to keep costs down and support local businesses. When construction of the three solar parks came in under budget while reliably providing environmentally-responsible electricity, IMPA and its Board of Commissioners started to envision the vast possibilities of building solar in several member communities. A spark was lit, and by 2015, six more solar parks were constructed in member communities, adding over 9 megawatts (MW) of solar capacity to the Agency's power supply portfolio.

In the ensuing years, IMPA increased its renewable footprint by building solar in collaboration with its member communities. As time progressed, so did the Agency's proficiency in constructing solar parks. By 2017, IMPA was constructing each of its solar parks with a single-axis



tracking system, allowing solar panels at each site to effectively track the movement of the sun throughout the day and generate more electricity as a result. The program continued to expand with new solar parks being constructed in member communities throughout the state, as well as additional parks being added to some communities whose infrastructure were able to handle more than one solar park . With the help of this program, IMPA achieved at least 30% low or no carbon resources by 2020 while still offering some of the lowest wholesale electric rates in the state of Indiana.

The success of IMPA’s solar program continues to thrive in recent years. In 2023, IMPA had its most prolific year yet for its solar park program as the Agency brought seven solar parks online in member communities. The agency’s largest park – at 9.9 MW – was completed, and IMPA celebrated a milestone as the Agency’s 50th solar park came online late in the year. From a small, idealistic program that started with three, 1-MW parks in 2014,

the Agency’s solar park program has grown exponentially in under 10 years. The Agency now has over 196 MW of solar power in member communities. Plans are already underway for four additional parks, and the Agency expects to surpass 209 MW of solar capacity by the end of 2025. The solar park program plays a key role in IMPA’s diverse power supply portfolio, and with its proven success rate, the Agency continues to provide a diverse fuel mix that benefits both consumers and the environment. •



**IMPA’s 50th Solar Park Ribbon Cutting**

# Reader Feedback

The **Indiana Municipal Power Agency** (IMPA) is a not-for-profit organization that provides a low-cost, reliable, and environmentally-responsible power supply to its members. IMPA provides this wholesale power to 61 communities in Indiana and Ohio, who collectively make up the Agency's membership.

What does having reliable electricity mean to you and your family?



Send your answer to [newsletter@impa.com](mailto:newsletter@impa.com), along with your name, e-mail address, and address for a chance to win an energy efficiency prize pack!

## Topic Survey

Is there more about your community that you would like to know? Do you have questions about how public power or your municipally-owned utility works? Would you like to learn more tips and tricks as to how you can improve your home's energy efficiency?

Reach out to [newsletter@impa.com](mailto:newsletter@impa.com) to suggest topics for future *Municipal Power News* newsletters and let us know what articles you enjoy most, and what you'd like to see next!



2024 Easter Egg Hunt at Wilson Park, outside of Dublin Community Club

## Dublin Community Club

-continued from page 1

in the community, Dublin Community Club's impact has resonated with local families for years.

However, upkeeping these facilities is no easy feat. In recent years, the club's building sought to obtain funding to replace carpet throughout the building and upgrade the facility's aging HVAC system. Luckily, through donations from community members, as well as a grant from Reid Health in December, the club will be able to pursue such improvement projects to continue supporting the community. Reid Health's grant was a part of the health organization's mission to focus on "supporting maternal, infant, and children's health." Dublin Community Club's selection as a recipient recognizes the vital impact that the club has, serving as a community



center promoting physical activity, social interaction, and engagement.

Reid Health's support was one great step toward the numerous upgrades that Dublin Community Club is making. Another step that the organization is looking forward to is supporting improvements to Dublin's Wilson Park, which is only a short walk away from the club's main building. The town of Dublin is working to fundraise for new ADA-

compliant ground surface and equipment at the playground in Wilson Park to ensure children and families of all backgrounds can play and feel a sense of belonging.

Dublin Community Club lies within Wilson Park, and during the summer, the club utilizes both its indoor facilities and the park to host community and private events. Any improvements to the playground and park help to support the club's mission of fostering a vibrant social hub for children and adults throughout the area. The town hopes to raise \$50,000 by May 25th through Patronicity's website at <http://patronicity.com/DublinWilsonParkProject>. If Dublin meets this goal, a matching grant will be provided by the Indiana Housing and Community Development Authority, bringing the total funding to \$100,000. Town and Dublin Community Club leaders are appreciative of anyone who is able to donate funds to this effort as every cent counts.

As the Community Club ventures toward several improvements, they've also expanded their online presence with a new website at [www.dublincommunityclub.com](http://www.dublincommunityclub.com)! Community members are encouraged to visit their website to learn more about the history of the club, check out upcoming events, and more. Many thanks for the hard work of those at Dublin Community Club for keeping our town thriving! •

## What's the Word?

### *Investigating Power Terminology*

#### **Watt**

A watt is a unit of measurement used to show the rate of energy transfer over one second of time. Consequently, a kilowatt is equal to 1,000 watts, a megawatt is 1 million watts, and a gigawatt equals 1 billion watts.

You may have heard of a kilowatt hour (kWh), which is a common billing unit used by most utilities in the electric industry. Essentially, a kWh simply shows the energy use per hour of an appliance, device, or entire home measured in kilowatts. For example, a space heater rated at 1.5 kWh consumes 1,500 watts of power in one hour of continuous use!

Watts are named after James Watt, an inventor and engineer born in 1736 who also created the concept of horsepower.

# Cooking Corner

## Meatloaf

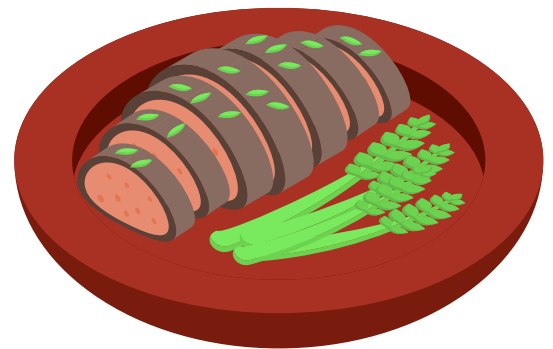
Recipe submitted by Marcie of Richmond, Indiana

- 2 lbs hamburger
- 2 eggs
- 10 to 12 crackers (crumbled)
- 1 onion diced
- 1 tsp baking soda
- 1/2 cup milk
- 2 pkgs instant oatmeal
- 2 to 3 squirts of ketchup

Mix all ingredients well. Form into a loaf and put into a greased loaf pan. Cover with ketchup. Refrigerate for 20 to 30 minutes covered to help the loaf firm up. Preheat oven to 350 degrees. Remove loaf from refrigerator and bake in preheated oven for 1 to 1 1/2 hours.

Once meatloaf is baked, remove from oven. Let rest on top of the stove for 30 minutes before cutting into so that it won't fall apart.

This recipe serves about 4 to 6 people. Invite your friends and family over to enjoy!



For a chance to be featured in the newsletter and win a prize, send your recipe to:

MPN Recipes  
11610 N. College Ave.  
Carmel, IN 46032  
or  
[newsletter@impa.com](mailto:newsletter@impa.com)

The MUNICIPAL POWER NEWS is a periodic publication of the Indiana Municipal Power Agency and the 61 communities that it serves with wholesale power.

Editor: Niki Dick  
Senior Director of Marketing Communications

Correspondent:  
Whitney Hicks  
Communications Coordinator

## MEMBERS

Advance  
Anderson  
Argos  
Bainbridge  
Bargersville  
Blanchester, OH  
Bremen  
Brooklyn  
Brookston  
Centerville  
Chalmers  
Coatesville  
Columbia City

Covington  
Crawfordsville  
Darlington  
Dublin  
Dunreith  
Edinburgh  
Etna Green  
Flora  
Frankfort  
Frankton  
Gas City  
Greendale  
Greenfield

Huntingburg  
Jamestown  
Jasper  
Kingsford Heights  
Knightstown  
Ladoga  
Lawrenceburg  
Lebanon  
Lewisville  
Linton  
Middletown  
Montezuma  
New Ross

Paoli  
Pendleton  
Peru  
Pittsboro  
Rensselaer  
Richmond  
Rising Sun  
Rockville  
Scottsburg  
South Whitley  
Spiceland  
Straughn  
Tell City

Thorntown  
Tipton  
Troy  
Veedersburg  
Walkerton  
Washington  
Waynetown  
Williamsport  
Winamac

# What are the Benefits of Public Power?

In the last issue of the *Municipal Power News*, we asked you what some of the benefits of public power are. As a reader of this newsletter, you live in a public power community, which means the electric utility that serves your power needs is a not-for-profit utility, owned and operated by your municipality.

The benefits of public power are numerous. Here is what some of our readers had to say about the advantages of living in a public power community.

**“By being a part of the community, public power utilities can boost investment in the community, support local education, and be involved with charitable programs. They also care about the overall well-being of the communities they serve.”**

**– Fred**

“Since public utilities are nonprofit organizations, their main focus is on providing affordable services rather than maximizing profit. This often leads to lower rates for customers, as any surplus revenue is reinvested into the improvement and expansion of services. Public power

also eliminates the need for shareholders and dividends, further reducing costs. Consequently, individuals and businesses can save money on essential utilities, allowing them to allocate their resources more efficiently.”

**– Chris**

**“There are many benefits to public power, such as being able to be provided with economic advantages. IMPA makes sure all electric needs of the community are met, as well. It boosts community investments, supports local education, and gets involved with beautification.”**

**– Bridgette**

These are all great answers that highlight how public power improves your community to help it thrive. Additionally, public power is affordable. According to a 2021 American Public Power Association (APPA) comparison, public power customers of Indiana and Ohio typically saved an average of more than 40% when compared to other types of electric utilities. APPA also reports that nearly 80% of projects currently under construction by public power utilities are solar and wind generating sources. This shows that public power utilities also recognize the importance of environmental stewardship and continue to invest in sustainable power sources.

Public power communities, including yours, consistently work to provide low-cost, reliable, and environmentally-responsible power to their consumers.

To learn more about public power, visit [www.impa.com/publicpower!](http://www.impa.com/publicpower!)

Indiana Municipal Power Agency  
11610 N. College Ave.  
Carmel, IN 46032

PRE-SORTED  
STANDARD  
U.S. Postage  
PAID  
Indianapolis, IN  
Permit # 563

The Municipal Power News is published  
by the Indiana Municipal Power  
Agency and Dublin Municipal Electric  
and Water.

IMPA Commissioner: Nathan Ulerick

# Rebates Available to You!

**D**id you know that you could earn rebates on qualifying heating, ventilation and air conditioning (HVAC) installations? The IMPA Energy Efficiency Program is offered through your local utility, in partnership with its power supplier, the Indiana Municipal Power Agency (IMPA). It is designed to help consumers save money through reduced energy usage by providing an incentive for higher efficiency replacement equipment.

Visit [www.impa.com/energyefficiency](http://www.impa.com/energyefficiency) to view a list of current rebates and download an application. For any questions, please contact [save@impa.com](mailto:save@impa.com)! •

