

# MUNICIPAL POWER NEWS

Crawfordsville Electric  
Light & Power



**IMPA**  
INDIANA MUNICIPAL POWER AGENCY

Volume 24, Issue 1 | Summer 2018



Summer Energy  
Saving Tips

Page 2

IMPA Solar  
Park Update

Page 4

CEL&P Celebrates  
Work Anniversaries

Page 4

## CEL&P Kicks Off Social Media Campaign

**C**rawfordsville Electric Light & Power (CEL&P) had been juggling with the idea of connecting with its customers via social media for several years. As of January 2018, the utility has developed Twitter and Facebook pages to disperse information regarding electric safety, energy savings, as well as updates on power outages and other utility happenings.

Andrea McArthur, CEL&P Accounts Payable and Marketing, said they finally decided to go live with the company's social media presence after debating it for several years.

-continued on page 8

# Beat the Heat with Energy Saving Tips

Summer is here, and that means hot, sticky temperatures. You can find relief in a number of places – the museum, pool and even your own home – and still control your electricity costs. As a member of the Indiana Municipal Power Agency, your local utility already provides you with affordable rates. Now, it's up to you to save even more and help your local utility manage costs during the peak summer months. Follow one or more of these tips and enjoy a cool, less expensive summer:

- Replace air filters regularly. Dirty air filters can increase your electric bill by 20 percent.
- Shade your outside air conditioning unit with trees or shrubs, but do not block the air flow. A unit operating in the shade uses as much as 10 percent less electricity. Keep plants, shrubs and bushes trimmed so they are at least 18 inches away from your outside A/C unit to allow air to flow freely.
- Use your ceiling fans and pedestal fans. Fans can make it feel three to four degrees cooler. Fans should turn counterclockwise in the summer and clockwise in the winter.
- Do not place lamps or televisions near your air conditioning thermostat. The thermostat senses heat from these appliances, which can cause the air conditioner to run longer than necessary.
- Turn your thermostat down when you aren't home, but be mindful of pets. You can save 10 percent of your electricity costs each year by turning the thermostat down 10 to 15 percent for 8 hours.
- Turn your thermostat down when you are sleeping.
- Windows can account for 10 to 25 percent of your electric bill. Install lightly colored window shades, drapes or blinds to reflect heat away from your windows. Close curtains on the south and west facing windows.
- Seal and/or insulate your ductwork.
- Use light-emitting diode (LED) or compact fluorescent light (CFL) bulbs instead of incandescent light bulbs. LEDs and CFLs last longer, save on energy costs and don't produce heat like the incandescent bulbs.
- Appliances and electronics generate heat. Turn them off when you aren't using them.
- Close the doors in rooms you don't often use so you're not cooling them as well.
- Try to stay in or out. Opening and closing doors lets cold air out and warm air in.



# How Much Do My Appliances Cost to Run?

Today we are using more appliances and electronics than ever before. Have you ever wondered how much it really costs to run each device? Here are some figures using average electric costs for a residential public power customer:

To run one dishwasher cycle  
(depending on how much  
hot water is used)



\$0.17 - \$0.73

To run a central A/C system  
for two hours



\$0.28 - \$0.81

To watch two hours of television  
(ranges for different types of TVs)



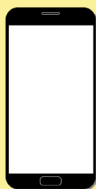
\$0.02 - \$0.06

To light a room for three hours with  
four 60-watt-equivalent CFLs



\$0.02

To recharge a smartphone



<\$0.01

To heat a household's water  
heater for one month



\$46 - \$77

\*Information from the American Public Power Association

# IMPA Welcomes New Solar Parks

IMPA added to its diverse portfolio of power supply resources in 2017 with the construction of four solar parks. In 2018, the Agency will continue its ongoing commitment to providing a low-cost, reliable and environmentally responsible power supply to its 61 communities.

Thousands of additional homes around the state were powered last year thanks to the efforts of IMPA and the member communities the Agency serves. Communities in which solar parks were completed in 2017 include Anderson, Flora, Greenfield and Spiceland.

Other IMPA communities in which solar parks have been built include Argos, Bainbridge, Crawfordsville, Frankton, Huntingburg, Pendleton, Peru, Rensselaer, Richmond, Tell City, Washington and Waynetown.

Raj Rao, IMPA President and CEO, said the output of solar parks throughout the state enables the Agency to continue expanding its diverse portfolio through the addition of solar energy.

"We are certain these parks will have a lasting impact on the communities," Rao said.

IMPA has begun construction on additional solar parks in IMPA member communities for 2018. Generation data for each solar park is available on IMPA's website at [www.impa.com/solar](http://www.impa.com/solar). •

## Anderson 2

- 8.1 MW
- Largest IMPA solar park
- Powers over 1,000 homes annually

## Flora

- 0.81 MW
- 2,964 solar panels
- Powers over 100 homes annually

## Greenfield

- 2.84 MW
- 10,450 solar panels
- Powers over 400 homes annually

## Spiceland

- 0.53 MW
- 1,938 solar panels
- Powers over 80 homes annually

# CEL&P Celebrates Work Anniversaries

Crawfordsville Electric Light & Power (CEL&P) would like to thank these employees for their years of hard work and dedicated service!



Carrie Coon – 20 years



Steve Gillan – 25 years



Phil Goode – 40 years



John Keller - 45 years



# Cooking Corner

For a chance to be featured in the newsletter and win a prize, send your recipe to:

MPN Recipes  
11610 N. College Ave.  
Carmel, IN 46032  
or  
[newsletter@impa.com](mailto:newsletter@impa.com)

The **MUNICIPAL POWER NEWS** is a periodic publication of the Indiana Municipal Power Agency and the 61 communities that it serves with wholesale power.

**Editor:** Niki Dick  
Director of Marketing  
Communications  
[niki@impa.com](mailto:niki@impa.com)

**Correspondent:**  
Alicia Kelly  
Communications Specialist  
[aliciak@impa.com](mailto:aliciak@impa.com)

Send submissions and comments to:  
11610 N. College Ave.  
Carmel, IN 46032 or  
[newsletter@impa.com](mailto:newsletter@impa.com).

## Pesto

Recipe submitted by Kristy Lewellyn of Linton, Indiana

2 cups packed fresh basil leaves  
1/2 cup extra virgin olive oil  
1/3 cup pine nuts  
3 medium sized garlic cloves minced  
salt & pepper  
1/2 cup parmesan - optional

Chop basil, nuts & garlic as finely as possible and slowly add other ingredients. The perfect start to your own Bruchetta. Or, serve over pasta or as an appetizer with crackers or bread.

## Chutney Cheese Canapé

Recipe submitted by Leisa Lowrey of Jasper, Indiana

8 oz. cream cheese  
1/4 c. chutney, chopped fine  
1/2 tsp. dry mustard  
1 tsp. curry powder  
toasted slivered almonds  
serve in 1/2 pineapple - optional

Blend all ingredients well in blender or food processor. Chill for at least 4 hours. Scoop out pineapple half & fill with mix. Top with almonds. Serve with crackers (Ritz are best).

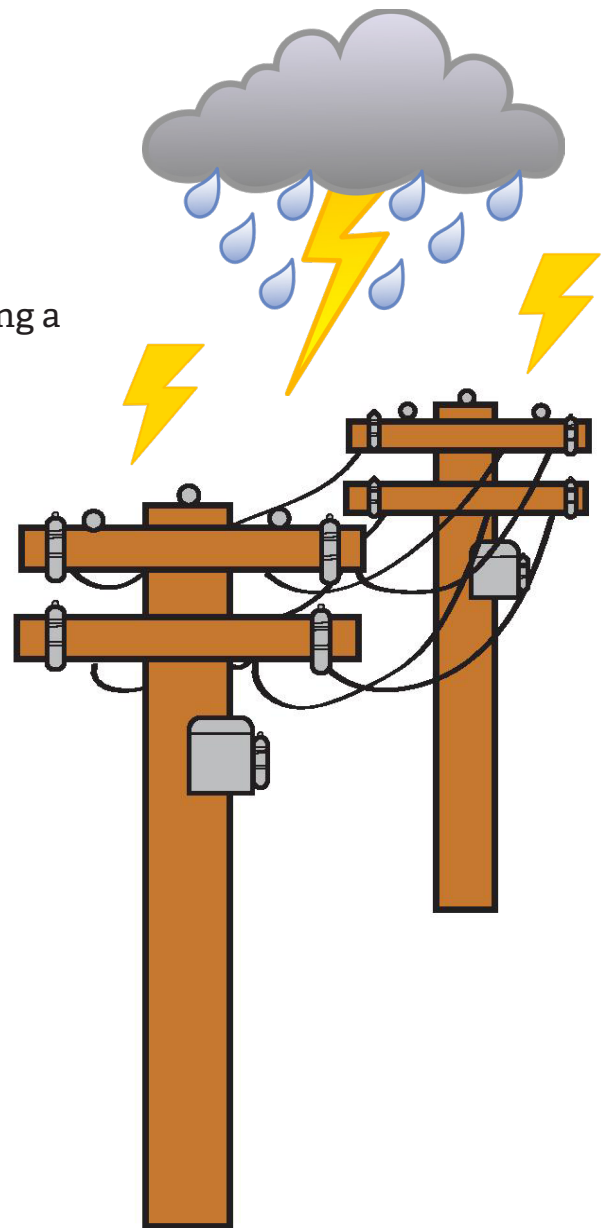


Advance	Covington	Huntingburg	Paoli	Thorntown
Anderson	Crawfordsville	Jamestown	Pendleton	Tipton
Argos	Darlington	Jasper	Peru	Troy
Bainbridge	Dublin	Kingsford Heights	Pittsboro	Veedersburg
Bargersville	Dunreith	Knightstown	Rensselaer	Walkerton
Blanchester, OH	Edinburgh	Ladoga	Richmond	Washington
Bremen	Etna Green	Lawrenceburg	Rising Sun	Waynetown
Brooklyn	Flora	Lebanon	Rockville	Williamsport
Brookston	Frankfort	Lewisville	Scottsburg	Winamac
Centerville	Frankton	Linton	South Whitley	
Chalmers	Gas City	Middletown	Spiceland	
Coatesville	Greendale	Montezuma	Straughn	
Columbia City	Greenfield	New Ross	Tell City	

# Thunder and Lightning, Oh My!

**T**hunderstorms can be very unpredictable. It could be a warm, sunny day, and minutes later a dark cloud appears on the horizon. Every year in the United States, lightning kills about 100 people and injures about 250 others. Follow these steps to ensure the safety of yourself and others during thunderstorms:

- Be cautious and aware of your actions during a thunderstorm.
- Don't handle any kind of electrical equipment.
- Even using the telephone can be dangerous during a storm because lightning can follow the phone circuits after striking miles away. Cordless and cellular phones are generally safe, but any metal object can become a hazard when used outside during a storm.
- If you must be out during a storm, avoid wide open area and stay away from wire fences, railroad tracks and all metal objects.
- Also, stay clear of trees and poles – tall objects and wet wood attract lightning.



The bottom line is that storms are dangerous, so exercise caution and be prepared!

# Follow IMPA on Social Media!



Indiana Municipal Power Agency



impapower



@IMPAPower

#IMPAPower



IMPAPower



Indiana Municipal Power Agency

## Tidbits & Trivia

**Question:** How many solar parks did IMPA open in 2017?

- a) 1
- b) 4
- c) 6
- d) 7

Send your answer to the question to IMPA, and we will randomly select winners from all of the correct entries to receive an energy efficiency prize pack. Please send your name, e-mail address and address with your answer to:

[newsletter@impa.com](mailto:newsletter@impa.com)

OR

MPN Energy Efficiency Quiz  
11610 North College Avenue  
Carmel, IN 46032

The Indiana Municipal Power Agency (IMPA) is a not-for-profit organization that provides an economic, reliable and environmentally-responsible power supply to its members.

IMPA member utilities purchase their power through IMPA and deliver that power to the residents and companies within the community.

## Renewable Energy

Energy that is collected from resources which are naturally replenished on a human timescale, such as sunlight, wind, rain, tides, waves, and geothermal heat.

Example: Solar parks are a form of renewable energy.

PRE-SORTED  
STANDARD  
U.S. Postage  
PAID  
Indianapolis, IN  
Permit # 9555

The Municipal Power News is published by the Indiana  
Municipal Power Agency and Crawfordsville Electric  
Light & Power.

IMPA Commissioner: Phil Goode

## Social Media

- continued from page 1

“We want to get the positive news we have at CEL&P out there for our customers,” McArthur said. “Some of the employees were using their personal Facebook pages to get the information out, but we decided it was time to get some social media outlets for the company.”

McArthur said the Twitter page already has more than 100 followers, and the Facebook page has more than 200 followers and likes. McArthur said she tries to put the same content across both pages so no one misses out on any information they are releasing.

“We are just starting out, so we haven’t gotten a lot of feedback from our customers at this point,” she said. “I assume when we have an outage we will get some questions from our followers, but we anticipate that and plan on getting as much information to them as possible.” ●

■ **Facebook: Crawfordsville Electric Light & Power** 

■ **Twitter: @CvillePower** 