

# Municipal Power News



Richmond Power & Light

Volume 28, Issue 1 | Spring 2023



## RP&L Honored on National Level

This April, Richmond's electric utility was awarded the American Public Power Association (APPA) Certificate of Excellence in Reliability for the calendar year of 2022. APPA is the voice of not-for-profit, community-owned utilities that power 2,000 towns and cities nationwide. Each year, APPA is proud to award outstanding public power utilities across the country who have made special efforts to supply their customers.

APPA's Certificate of Excellence in Reliability honors utilities whose power outage records compare exceedingly well against national statistics supplied by the federal Energy Information Administration. Recipients of the certificate fell in the top quartile of all utilities' System Average Interruption Duration Index (SAIDI)—a metric that accounts for the total time that an average utility customer experiences a power interruption in one year. Even the public power utilities who did not make the top quartile tended to skew better than other types of utilities, showing that most public power utilities are above average in reliability compared to all US providers. With Richmond Power & Light making the top quartile, the local utility can truly claim that it is among the "best of the best!" •

## Inside this Issue

### Page 2

*IMPA Responds to Winter Storm Elliott*

Winter storm reminds the utility industry of the importance of reliability.

### Page 4

*Tidbits and Trivia*

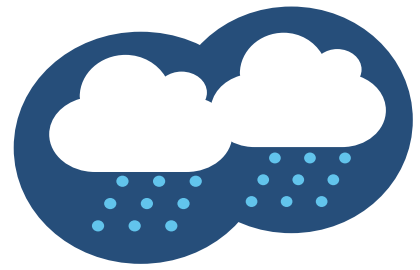
Give your answer for a chance to win a prize from IMPA!

### Page 7

*How Do I Save Energy in Hot Weather?*

See how readers of the newsletter responded to this question.

# IMPA Responds to Winter Storm Elliott



From December 22 to the 26 of 2022, Winter Storm Elliott swept across North America, causing record low temperatures and severe winter conditions throughout the United States. Snowfall, ice, and blizzard-like conditions blew through much of the Midwest while hazardous road conditions kept many of us hunkered down inside through the holidays. During these days of sub-zero temperatures, approximately 1.5 million utility customers throughout the country lost power (according to [www.poweroutage.us](http://www.poweroutage.us)).

Fortunately, Indiana utility customers were only a small portion of those without power, and the Indiana Municipal Power Agency (IMPA) worked diligently with neighboring utilities and the state's Regional Transmission Organizations to ensure the reliability of the power grid. IMPA's seven combustion turbines—totaling 249 megawatts (MW) of capacity in Anderson, Indiana, and Richmond, Indiana—were staffed and operational through the winter storm. The Anderson and Richmond units are run by IMPA employees who worked day and night through December's winter storm to ensure power was delivered to utility customers. These units,

which primarily run on natural gas and are built to operate in temperatures down to -20 degrees Fahrenheit, are a vital dispatchable resource in extreme weather events due to their capability to utilize ultra-low sulfur No. 2 fuel oil as a backup. The backup fuel allowed the units to run and provide power during the whole severe winter weather event.

Other staff members who were out in the field during the cold weather event included IMPA Service Corp's linemen and operations employees who responded to outages in member communities. During Winter Storm Elliott, IMPA Service Corp's crews responded to eight IMPA member communities to assist with power restoration to keep utility customers warm in their homes.

IMPA is grateful to the dedicated staff members who braved the historic winter conditions to ensure the rest of us could remain safe and warm at home. The Agency's reliability, whether during a typical day or an extreme period of uncertainty, is its upmost priority. Now, as we head toward the warmer weather of spring, IMPA looks forward to continuing its legacy of reliable operations and excellent electric service for all member communities. •

# How Does Reliable Electricity Reach Me?

Your power is unique as it is distributed not by a for-profit electric utility, but rather by your municipally-owned, locally controlled electric utility. Your municipal electric utility—also known as a “public power” utility—receives its power from the Indiana Municipal Power Agency, a not-for-profit organization created by 61 public power utilities in the Midwest. This is where your electricity begins!

## STEP 1

IMPA is the wholesale power provider to your community, meaning that it produces or purchases electricity (depending on what is most economically advantageous) and transmits that energy to your local utility. IMPA's power supply portfolio is made up of coal, natural gas, solar, wind, and nuclear energy. By providing its member communities with power from multiple sources, IMPA can maintain stable costs.

## STEP 2

Once the power is generated, no matter from which type of resource, a set of equipment located within a substation is used to “step up” the electricity's voltage. A higher voltage means that the electricity can travel longer distances over high-voltage transmission lines with lower energy losses.



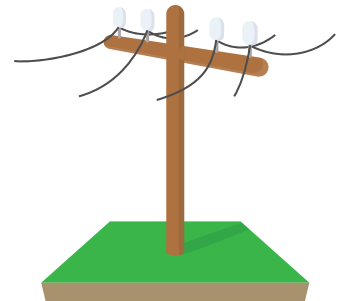
## STEP 3

Once “stepped-up,” the electricity is sent along transmission lines, allowing it to reach IMPA's member communities. IMPA jointly owns a portion of the state's transmission system, which covers about 2/3 of Indiana.



## STEP 4

Once the electricity reaches a community like yours, it is “stepped down” by a local substation, bringing the power to a lower voltage that will allow it to travel on your local community's distribution power lines.



## STEP 5

The power then travels along local distribution lines owned by your public power utility to reach homes and businesses in the community.





# Tidbits & Trivia

The **Indiana Municipal Power Agency** (IMPA) is a not-for-profit organization that provides a low-cost, reliable, and environmentally-responsible power supply to its members. IMPA provides this wholesale power to 61 communities in Indiana and Ohio, who collectively make up the Agency's membership.

**Question:** What is one benefit of driving an electric vehicle rather than a gas-powered car?



Send your answer to [newsletter@impa.com](mailto:newsletter@impa.com), along with your name, e-mail address, and address for a chance to win an energy efficiency prize pack!

## Reader Survey

Is there more about your community that you would like to know? Do you have questions about how public power or your municipally-owned utility works? Would you like to learn more tips and tricks as to how you can improve your home's energy efficiency?

Reach out to [newsletter@impa.com](mailto:newsletter@impa.com) to suggest topics for future *Municipal Power News* newsletters and let us know what articles you enjoy most, and what you'd like to see next!



*Left, Pete Mayberry. Right, Bob Lichtenfels.*

## RP&L Retirees Recognized by City

In early May, two employees of Richmond Power & Light (RP&L) were recognized for their 49 years of service to the city's utility. Bob Lichtenfels and Pete Mayberry both retired at this milestone with nearly 5 decades of experience each.

Bob Lichtenfels came to RP&L as a lawnmower from the Elks Country Club. He was hired on September 27, 1973 and spent 49 years, 4 months & 17 days with RP&L. Bob, a lineman, finished his career as Assistant Transmission and Distribution Superintendent. He was the first recipient of

the Indiana Municipal Power Agency's Kerry Vincent Distinguished Lineworker Award in 2021.

In 1974, Pete Mayberry finished high school early and came to RP&L to inquire about employment the day he finished, at the recommendation of his guidance counselor. He received an interview the next day, was hired, and began working at RP&L on February 19, spending 49 years, 1 month & 16 days with RP&L. Pete, a lineman, finished his career as a Lineman Foreman.

Mayor Dave Snow honored Bob and Pete by reading a proclamation naming May 1, 2023 Bob Lichtenfels and Pete Mayberry Day in the City of Richmond.

Bob and Pete have seen many changes at RP&L throughout the years. They have helped build and transform the utility's current distribution system, and they have both spent countless hours away from family responding to outages and emergencies. They have been great trainers, mentors, and friends to several generations of RP&L employees.

Thank you to both of these tremendous workers and congratulations on your retirement!•



## It's Never a Ruff Day at RP&L!

Meet Mike—the fun-loving dog who visits RP&L Customer Service every day on his morning walk with his owner, Jared. Mike always gets a dog biscuit from staff, but he usually chooses to take it home and eat it later because he is more interested in visiting.

Mike was adopted from HELP the Animals, Inc. six years ago when he was only one year old. Now, he and Jared are best buddies. RP&L staff always look forward to their visits from Mike in the morning, and Mike loves seeing everyone too! •



## What's the Word?

### Gas Turbine Plant

*noun*

A facility which uses natural gas or other liquid fuels to power a combustion turbine and generate electricity. The first true gas turbine was patented in 1791!

IMPA owns seven combustion turbines and associated facilities totaling 419 MW in the aggregate. These include three units in Anderson, IN, two near Richmond, IN, and two in Indianapolis, IN. IMPA employees operate and maintain the combustion turbines located in Anderson and Richmond, while the plant in Indianapolis is operated and maintained under a contract with a separate utility that has two other units at the same facility.

For a chance to be featured in the newsletter and win a prize, send your recipe to:

MPN Recipes  
11610 N. College Ave.  
Carmel, IN 46032  
or  
[newsletter@impa.com](mailto:newsletter@impa.com)

The MUNICIPAL POWER NEWS is a periodic publication of the Indiana Municipal Power Agency and the 61 communities that it serves with wholesale power.

Editor: Niki Dick  
Senior Director of  
Marketing Communications

Correspondent:  
Whitney Hicks  
Communications  
Coordinator

# Cooking Corner

## Broccoli Casserole

Recipe submitted by Kimberly of Paoli, Indiana

- 2 lbs broccoli, frozen or cooked
- 1 roll ritz crackers, crumbled
- 1/2 lb velveeta, cubed
- 1 stick butter divided in half

Cook broccoli according to package directions. Add velveeta and 1/2 stick butter. Cook until melted. Butter a 2 qt casserole dish. Pour broccoli into casserole dish. Pour crumbled crackers on top. Melt remaining 1/2 stick butter and pour on crackers. Bake on 350 degrees for 30 minutes and enjoy!

## White Mountain Salad

Recipe submitted by Jean of Middletown, Indiana

- 1 small can crushed pineapple (in juice)
- 1 can chopped pecans
- 1/4 cup lemon juice
- 1 eight oz tub cool whip (thawed)
- 1 can Eagle brand milk

In a large bowl, stir all ingredients together. Cover and refrigerate for 2 hours.

“When I take this recipe to a dinner, I always get several requests for the recipe!” - Jean

## MEMBERS

Advance  
Anderson  
Argos  
Bainbridge  
Bargersville  
Blanchester, OH  
Bremen  
Brooklyn  
Brookston  
Centerville  
Chalmers  
Coatesville  
Columbia City

Covington  
Crawfordsville  
Darlington  
Dublin  
Dunreith  
Edinburgh  
Etna Green  
Flora  
Frankfort  
Frankton  
Gas City  
Greendale  
Greenfield

Huntingburg  
Jamestown  
Jasper  
Kingsford Heights  
Knightstown  
Ladoga  
Lawrenceburg  
Lebanon  
Lewisville  
Linton  
Middletown  
Montezuma  
New Ross

Paoli  
Pendleton  
Peru  
Pittsboro  
Rensselaer  
Richmond  
Rising Sun  
Rockville  
Scottsburg  
South Whitley  
Spiceland  
Straughn  
Tell City

Thorntown  
Tipton  
Troy  
Veedersburg  
Walkerton  
Washington  
Waynetown  
Williamsport  
Winamac

# How Do I Save Energy in Hot Weather?

Last year, we asked *Municipal Power News* readers, “What are some of the methods you use to reduce your energy consumption in hot weather?” Here’s what Kenneth had to say!

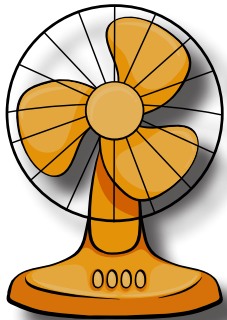
*“Our answer at home is to close the drapes, blinds, and try to cook with the air fryer, microwave, or outside on the grill instead of using the stove or oven on the really hot days. We’ve already purchased new thermo sliding glass doors with blinds and low-e ratings. We’ve also spray-foamed the basement*

*walls and the underside of the roof. For a 1964 house, we feel pretty efficient.*

*At work, we try to close the blinds and raise the thermostat a degree or two. We also bought two digital smart thermostats and replaced the old mercury bulb sliders.”*

-Kenneth E

That’s a great answer, full of energy efficiency tips! Below are a few other ways you and your family can save on energy this summer.



## Energy Efficiency Tip #1

Use fans around your home to circulate cool air. Set ceiling fans to turn counter clockwise, as this will push air down and create a cooler feeling in the room.

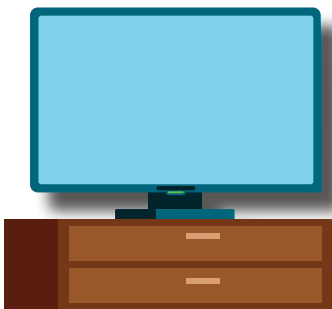
## Energy Efficiency Tip #2

Replace air filters in your home with each season. Dirty air filters can cause your system to work harder and longer, using unnecessary energy as a result.



## Energy Efficiency Tip #3

Keep lamps and TV sets away from your thermostat. Thermostats can sense the heat that these items give off, which can cause the A/C to run longer than required.





Indiana Municipal Power Agency  
11610 N. College Ave.  
Carmel, IN 46032

PRE-SORTED  
STANDARD  
U.S. Postage  
PAID  
Indianapolis, IN  
Permit # 9555



The Municipal Power News is published  
by the Indiana Municipal Power  
Agency and Richmond Power & Light.

IMPA Commissioner: Tony Foster

## New RP&L Billboard Features Locals!

**R**ichmond natives Tripp and Colton were excited to see their photo featured on the Richmond Power & Light (RP&L) and the Indiana Municipal Power Agency's (IMPA) newest billboard in the city. Both RP&L and IMPA work diligently to ensure that local children like Tripp and Colton have a bright future to look forward to. Next time you're on the highway, look out for these two! •

