

# Municipal Power News



Williamsport Light and Water

Volume 28, Issue 3 | Winter 2023



## Wabash River Greenway Project Makes Headway

This year, the Wabash River Enhancement Corporation's (WREC) "Wabash River Greenway Project" was awarded \$25 million from the US Department of Transportation (USDOT) for completion of the project's second phase. The Wabash River Greenway Project seeks to develop a 90-mile-long stretch of continuous trails, paths, and sidewalks connecting five Indiana counties along the Wabash River. The town of Williamsport will be a vital link on the trailway, representing one of the southernmost communities along the path. The five counties involved include Fountain County, Warren County, Tippecanoe County, Carroll County, and Cass County. Williamsport is considered one of eight 'Trail Towns' in the project, along with Logansport, Delphi, Battle Ground, Lafayette, West Lafayette, Attica, and nearby Covington, that will help connect users of the greenway with the history and culture of the immediate region.

The funding will primarily be used in Tippecanoe County, the most centralized area of the greenway, and will serve to better connect the county to its surrounding regions

-continued on page 4

## Inside this Issue

### Page 2

*Winter Safety with IMPA!*

Learn how you can have a safe holiday season with your friends and family.

### Page 4

*Tidbits and Trivia*

Respond to the question featured on this page for a chance to win a prize!

### Page 7

*Saving Energy in Cold Weather*

Read the various ways that readers of this newsletter save energy in the cold.

# Winter Safety with IMPA!

The winter season is upon us, and while it is the least favorite time of year for many, preparing for the cold can help things go over a bit more smoothly. Use this time to remind yourself and your loved ones about the following safety tips that will help everyone enjoy the time to come as best as they can.

## Driving

- Drive slowly and attentively in icy or snowy conditions. Give yourself plenty of time to get to your destination.
- Keep your vehicle's gas tank as full as possible throughout the winter season. This can prevent your fuel lines from freezing, which can result in your car not starting.
- Dress warmly and keep an extra set of clothes and blankets in the car.
- Avoid using backroads, as major streets and highways will have better clearance in bad conditions.



## Avoiding Fires

- Never plug a space heater into an extension cord or power strip - only plug them directly into an outlet.
- Never leave a space heater, lit fireplace, or candles unattended for long periods of time.
- Portable generators can be great during a winter power outage, but keep in mind that they pose fire and carbon monoxide poisoning risks. Never run a generator indoors or in enclosed areas, and keep fuel containers away from heating devices.

## Snow Removal

- Before going outside to clear snow from a driveway or walkway, be sure to stretch just like you would before regular exercise.
- When shoveling snow, be sure to stay hydrated and avoid overexertion. Take frequent breaks to let your body rest, as cold weather can put a unique strain on your heart and lungs.
- Keep dry while working outside with snow. Wet clothes will make your body lose heat faster.



## How Does Public Power Work?

The transmission lines stretching across the country carry electricity to households and businesses nationwide. However, some of the electricity travels to customers served by investor-owned utilities (IOUs) or rural electric cooperatives (REMCs), while other households like yours are served by a public power utility. Your community, as a member of the Indiana Municipal Power Agency (IMPA), buys its electricity from the Agency before selling it to you and bringing it to your door. The electricity that your community purchases is called wholesale power—it is supplied to your local public power utility for resale to retail customers of the utility. By purchasing wholesale power in bulk, the member utilities of IMPA are able to provide electricity with the economic advantages than if they were to individually generate the power themselves or purchase it elsewhere. Your community takes advantage of this benefit, since all 61 member communities of IMPA work together to purchase power in bulk through the Agency.

Member utilities of IMPA have contracts with the Agency to ensure that all the electric needs of the community are met. IMPA, by either generating power at a

generation facility or purchasing it from other utilities, places the power on the electric grid through transmission lines.

The high voltage electricity travels across the grid on these transmission lines to your community. Before the electricity gets to your residence, a substation transformer is used to lower the voltage of the electricity to make it safer to travel across shorter distances than the transmission lines cover. This lower voltage also makes it safer for the electricity to be in closer proximity to traffic and people. Once electricity goes through the transformer in the substation, it moves through distribution lines in your local community to a transformer at homes and businesses. It then arrives at your home and allows you to turn on the lights, heat your home, and watch tv.

Public power utilities are not just there to provide power – they work for the betterment of the community, too. These utilities are embedded in the fabric of their communities—boosting community investment, supporting local education, and getting involved with beautification and charitable programs. As a result, public power customers benefit from affordable energy, better service, local control, and a utility that cares about the overall well-being and growth of your community. •



*At IMPA Board Meetings, a representative from your community helps guide the direction and decisions of the Agency.*

# Tidbits & Trivia

The **Indiana Municipal Power Agency** (IMPA) is a not-for-profit organization that provides a low-cost, reliable, and environmentally-responsible power supply to its members. IMPA provides this wholesale power to 61 communities in Indiana and Ohio, who collectively make up the Agency's membership.

What are some of the benefits of public power?



Send your answer to [newsletter@impa.com](mailto:newsletter@impa.com), along with your name, e-mail address, and address for a chance to win an energy efficiency prize pack!

## Reader Survey

Is there more about your community that you would like to know? Do you have questions about how public power or your municipally-owned utility works? Would you like to learn more tips and tricks as to how you can improve your home's energy efficiency?

Reach out to [newsletter@impa.com](mailto:newsletter@impa.com) to suggest topics for future *Municipal Power News* newsletters and let us know what articles you enjoy most, and what you'd like to see next!



## Wabash River Greenway

-continued from page 1

with accessibility improvements, extended trails, and new sidewalks and bridges. Though Tippecanoe County may seem far, these enhancements will help pedestrians and bikers from Fountain County to Cass County gain safer and more approachable access to all eight trail communities along the 90-mile stretch. Overall, this second phase of construction will be a milestone achievement in WREC's goal to better link dozens of parks, historical sites, and local attractions throughout northwest Indiana.

"WREC and our community partners are excited to learn of our project's award," said Stanton Lambert, Executive Director of the WREC in a press release regarding the grant. "This is the largest of several recent



WREC began this project in 2020 in partnership with elected officials from each of the five counties involved, parks and conservation groups, and economic development organizations in Indiana. This project is a part of the Wabash Heartland Innovation Network, an initiative by 10 counties in north central Indiana to develop the region's affordable cost of living, sense of community, and economy.

Williamsport's beautiful parks and historic sites make it a prime stop along the greenway. WREC is proud to highlight the town's historic residences, original Carnegie library, and Warren County Courthouse as amenities worth preservation and promotion.

With Williamsport connected to an extensive greenway, the community will receive several benefits. Trail construction nearly always brings a positive return on investment to communities nation-wide, bringing in tourists and new visitors. As reported by WREC, Indiana trail users spend on average over \$3,500 per year, spending 3-10 times more in local shops and restaurants than community residents. In this way, the greenway brings a great deal of economic development opportunity to Williamsport. Additionally, neighborhoods around the greenway can anticipate increased property

-continued on page 8

successes that have marked the beginning of the active development phase of the Wabash River Greenway. An award of this magnitude from the USDOT reinforces the need for, and importance of, active transportation infrastructure and its accompanying health, economic, and recreational benefits to our community locally, within our region, and the State.”

## What's the Word?

*Investigating Power Terminology*

### Distribution Lines

Utilities use distribution lines to transport electricity from the larger transmission system to individual customer homes and businesses. While transmission lines carry electricity across long distances at a high

voltage, distribution lines carry electricity over shorter distances at a lower voltage. You may see transmission lines while driving on a highway, but the utility lines you see on the streets of your community are distribution lines.

Distribution lines bring electricity to its final stage of delivery. As a member of a public power utility, your town or city owns and operates the distribution lines in your community.

# Cooking Corner

## Eggnog Bread

Recipe submitted by Susan of Richmond, Indiana

For a chance to be featured in the newsletter and win a prize, send your recipe to:

MPN Recipes  
11610 N. College Ave.  
Carmel, IN 46032  
or  
[newsletter@impa.com](mailto:newsletter@impa.com)

The MUNICIPAL POWER NEWS is a periodic publication of the Indiana Municipal Power Agency and the 61 communities that it serves with wholesale power.

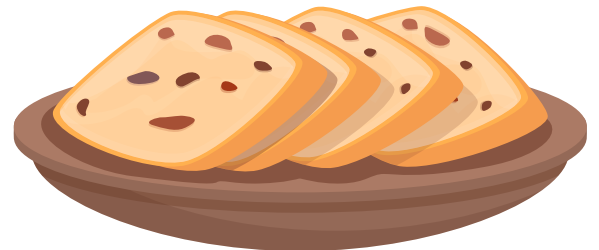
Editor: Niki Dick  
Senior Director of Marketing Communications

Correspondent:  
Whitney Hicks  
Communications Coordinator

- 2 large eggs
- $\frac{3}{4}$  cup skim milk
- $\frac{1}{4}$  cup orange juice
- 1  $\frac{3}{4}$  cups eggnog
- $\frac{1}{2}$  cup canola oil
- 1 tbsp grated orange zest
- 4  $\frac{3}{4}$  cups all-purpose flour
- $\frac{3}{4}$  cup sugar
- 2 tbsp baking powder
- $\frac{1}{2}$  tsp salt
- 1 tsp ground cinnamon
- 1 tsp ground nutmeg
- $\frac{3}{4}$  cup dried cranberries
- $\frac{3}{4}$  cup chopped macadamia nuts

Preheat oven to 350°F. Whisk wet ingredients together with orange zest in a bowl. In another bowl, combine all dry ingredients except for cranberries and macadamia nuts. Add the liquid mixture to the dry mixture, carefully stirring until the flour is moistened. Fold in cranberries and nuts. Grease and flour 2 loaf pans and pour in batter. Bake for 50-60 minutes, or until a toothpick inserted comes out clean. Cool in pans for 10 minutes, then remove wire racks to cool completely. Slice and serve with orange marmalade. Or, to serve without a spread, use the glaze below.

In a small bowl, mix:  
- 1 tbsp eggnog  
-  $\frac{3}{8}$  cup confectioner's sugar



Drizzle mixture over the cooled loaves

## MEMBERS

Advance  
Anderson  
Argos  
Bainbridge  
Bargersville  
Blanchester, OH  
Bremen  
Brooklyn  
Brookston  
Centerville  
Chalmers  
Coatesville  
Columbia City

Covington  
Crawfordsville  
Darlington  
Dublin  
Dunreith  
Edinburgh  
Etna Green  
Flora  
Frankfort  
Frankton  
Gas City  
Greendale  
Greenfield

Huntingburg  
Jamestown  
Jasper  
Kingsford Heights  
Knightstown  
Ladoga  
Lawrenceburg  
Lebanon  
Lewisville  
Linton  
Middletown  
Montezuma  
New Ross

Paoli  
Pendleton  
Peru  
Pittsboro  
Rensselaer  
Richmond  
Rising Sun  
Rockville  
Scottsburg  
South Whitley  
Spiceland  
Straughn  
Tell City

Thorntown  
Tipton  
Troy  
Veedersburg  
Walkerton  
Washington  
Waynetown  
Williamsport  
Winamac

# How Do I Save Energy in Cold Weather?

Last year, we asked readers of the *Municipal Power News* some of the methods they use to reduce energy consumption in cold weather. Here is what some of you said!

“I have reduced my energy consumption due to my purchase of long cloth door tubes that resemble snakes. They are the draft prevention cloth tubes approximately 36” x 3 1/2” filled with beans or double tubes with center strips. They can be placed in the home at the bottom of outside doors or where drafts enter under doors inside a home. The double tube style can slide under

the storm door outside the house door---one tube outside the storm door and the other tube set between the storm door and the inside house door. These can also be used on doors in cold rooms with closed doors to stop drafts. This is really great in blocking cold air at the floor level that cause cold feet and drafts.”

- Jean

“I often use an infrared/radiant space heater that is thermostat-controlled. During the day I close off unused rooms so my living room/kitchenette is comfortably warm. The glow of the radiant heater is pleasing like a fireplace. You definitely need to wear insulated slippers or plush socks indoors in

addition to layered clothing. Wearing indoor weather-appropriate clothing, I can keep my heater set on a lower temperature—generally less than 65 degrees. My furnace, in comparison, needs to be set at 70+ degrees to maintain satisfactory room warmth.”

- Penny

“During the cold weather months, the most effective method for reducing my energy consumption is by closing off rooms that do not necessarily have to be heated all day. I also put plastic on any drafty windows and use draft stoppers for my doors. I’ve replaced

most of my home’s light bulbs with energy efficient LED bulbs and I change my furnace filter often. Room darkening curtains help keep the heat in and as the famous saying goes, I never let the water run!”

- Tiffany

“The method that I use most is to wear warmer clothes in the house. I know that there are people who want to sit around the house in shorts and t-shirts, and run around the house in bare feet, all the while having

their thermostat turned way up. That makes no sense to me. Today, for instance, it’s 14° outside. The thermostat is set at 68° inside. I’m wearing a flannel shirt with a puffy vest, long pants, and shoes.”

- Bruce

Indiana Municipal Power Agency  
11610 N. College Ave.  
Carmel, IN 46032

PRE-SORTED  
STANDARD  
U.S. Postage  
PAID  
Indianapolis, IN  
Permit # 9555

The Municipal Power News is published by the Indiana Municipal Power Agency and Williamsport Light and Water.

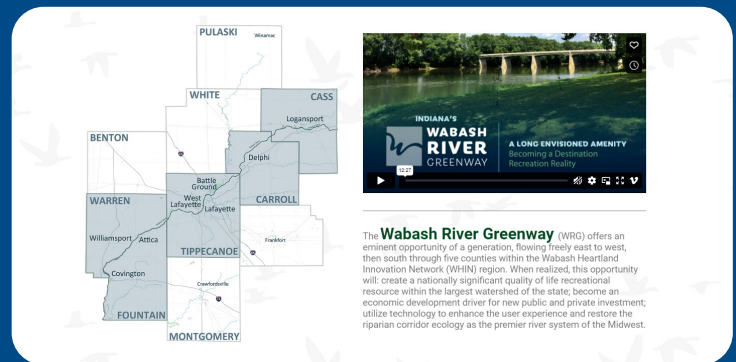
IMPA Commissioner: Kevin Strickler

# Wabash River Greenway

-continued from page 5

values, and the establishment of trail accessibility promotes healthy living habits to the community.

With this project underway, Williamsport residents have much to look forward to in terms of quality of life, economic opportunity, and connection to neighboring communities. If you would like to learn more about the Wabash River Greenway project, visit [www.wabashrivergreenway.com](http://www.wabashrivergreenway.com).



*Wabash River Greenway Website*