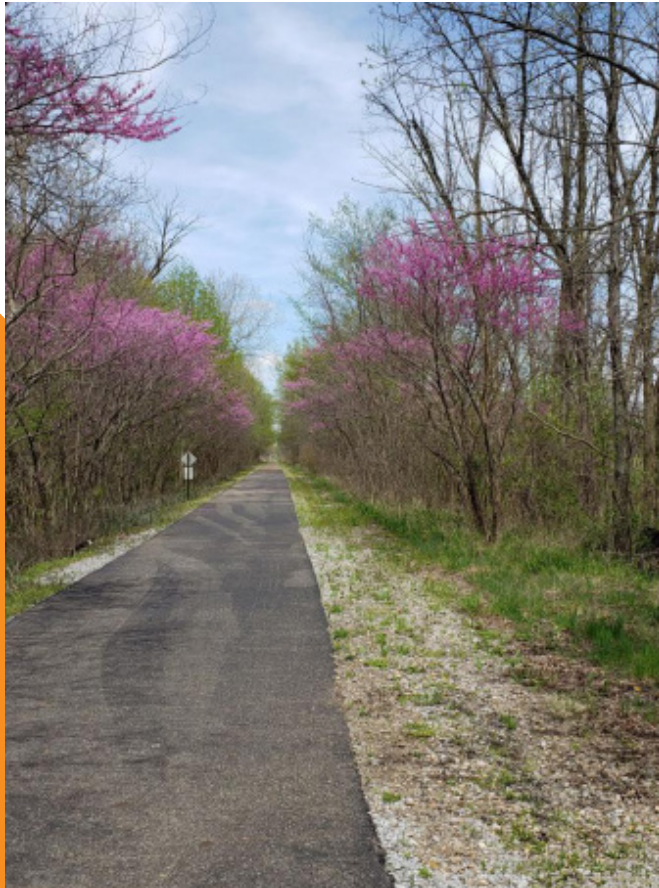


# Municipal Power News



Town of Winamac  
Volume 28, Issue 2 | Summer 2023



## Panhandle Pathway Benefits Winamac

**F**riends of the Panhandle Pathway, a not-for-profit organization that maintains and works to improve the local Panhandle Pathway, received a grant from the Community Foundation of Pulaski County early this year to enhance a section of the pathway about four to five miles south of Winamac. The group plans to establish this portion of the trail as a “Prairie Grass” section, planting milkweed and other pollinator plants that will attract and aid vital species such as monarch butterflies.

The grant is a great help to the Friends of the Panhandle Pathway, as the entire organization is led and run by volunteers. The 22-mile pathway runs between Winamac, on the banks of the Tippecanoe River and Kenneth in the historic Wabash River Valley. This trail follows the former route of the Pennsylvania Railroad Line (Panhandle route). Changing landscape and topography along the path gives pedestrians and cyclists the opportunity to travel through farmland, shady wooded areas, and view several Indiana creeks and rivers. Since 2005, the entire trail has been constructed and preserved by the dozens of volunteers that collaborate through Friends of the Panhandle Pathway, and all funding that is used by the organization

-continued on page 4

## Inside this Issue

### Page 2

#### *40 Years of IMPA*

The Indiana Municipal Power Agency celebrates four decades of operation.

### Page 4

#### *Tidbits and Trivia*

Give your answer for a chance to win a prize from IMPA!

### Page 7

#### *What are the Benefits of Electric Vehicles?*

See how readers of the newsletter responded to this question.

# 40 Years of the Indiana Municipal Power Agency



The Indiana Municipal Power Agency (IMPA) began with a single idea to enable municipally-owned utilities to join and share power resources for a more reliable and cost-effective future. Before the formation of the Agency, individual municipal utilities in Indiana only had limited access to power supply options, and their small size kept them vulnerable to the changing energy market. However, the founders of IMPA believed in the adage of “strength in numbers,” and sought to withstand these challenges by working together. In 1979, representatives of 11 Indiana municipally-owned utilities organized themselves into a Joint Action Committee to investigate the feasibility of uniting into a joint action agency, which would allow them to share generation resources and bulk purchase power at a mutually beneficial low cost.

By 1980, Indiana state legislation was passed allowing the 11 representative communities to unite in the purchase of

wholesale electric power and transmission services, as well as issue bonds to pay for the cost of projects. This allowed the formation of the Indiana Municipal Power Agency, which had its first operating year in 1983—40 years ago.

In four decades, IMPA has been through a vast number of changes, but has always remained true to its strong founding mission of providing a low-cost, reliable, and environmentally-responsible power supply to its members. Through the years, the Agency’s membership has grown from 11 Hoosier communities to 61 towns, cities, and villages in Indiana and Ohio. The Agency has also grown to offer services beyond power supply, including economic development assistance, marketing and communications support, and government relations work. IMPA also formed its operations and engineering subsidiary—IMPA Service Corp—in 2001 to provide a cost-effective resource for members regarding engineering work, rate studies, and electric system management. These services continue to strengthen IMPA’s membership for the betterment of public power utility customers across the Midwest.

IMPA initially began in 1983 with 24.95% ownership in a coal-fired baseload generating facility called Gibson 5 in southwestern Indiana. As the Agency’s membership grew throughout the decades, IMPA would come to acquire additional power supply resources to support its



*Some of the founders of IMPA*

members and incorporate diverse fuel types into its portfolio. By 2023, IMPA has added seven combustion turbines operated primarily on natural gas, four with fuel oil backup for reliability, to its resources, as well as joint-ownership in other coal-fired power plants in Kentucky and Illinois. The Agency has also incorporated power purchase agreements of nuclear, wind, and solar power into its power supply portfolio.

Since 2014, IMPA has also developed its own solar power program—constructing 44 solar parks in member communities throughout Indiana. This solar park initiative has played an integral role in building the renewable portion of IMPA’s portfolio and diversifying resources to the benefit of all members. Moving forward, IMPA is working toward a projected energy portfolio made up of 46% no-carbon resources by 2026. As environmental regulations continually change, and as older generation units near their end-of-life expectancy, the shift is a necessity for the Agency’s future success.

Forty years ago, the founders of IMPA provided the building blocks for a resilient foundation, and this foundation remains strong. IMPA as an Agency today has truly been formed by its history — the visionaries



that created the Agency, the decisions that shaped the Agency’s operations, and the evolution of IMPA’s service and power supply over time. As the Agency embarks on its next 40 years of existence, IMPA will continue to write its own story and history as the Agency adapts for future generations. •

## IMPA Adds 75 MW of Wind Power

This June, Alta Farms wind farm in DeWitt County, Illinois, announced it began operations to produce renewable wind power. IMPA previously signed a power purchase agreement with the wind farm’s developer, Enel North America, for 75 megawatts of power, which has

now been added to the Agency’s power supply portfolio.

IMPA continues to build upon its historic foundation with wise investments in the Agency’s power supply portfolio, ensuring that its members will always have their everchanging electric needs met.

# Tidbits & Trivia

The **Indiana Municipal Power Agency** (IMPA) is a not-for-profit organization that provides a low-cost, reliable, and environmentally-responsible power supply to its members. IMPA provides this wholesale power to 61 communities in Indiana and Ohio, who collectively make up the Agency's membership.

What are some of the benefits of solar energy?

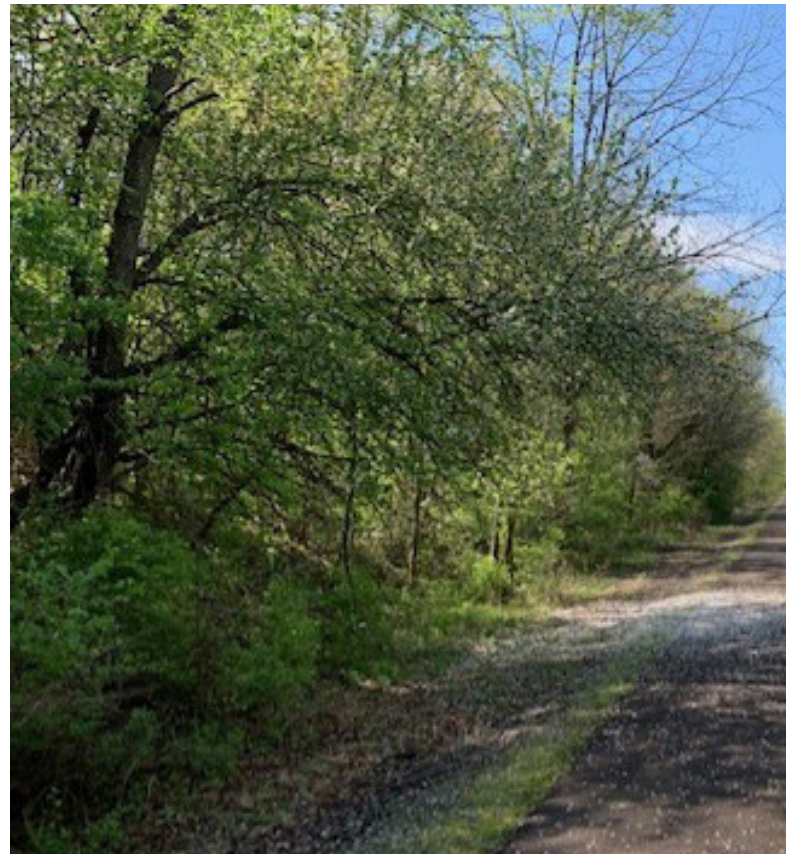


Send your answer to [newsletter@impa.com](mailto:newsletter@impa.com), along with your name, e-mail address, and address for a chance to win an energy efficiency prize pack!

## Reader Survey

Is there more about your community that you would like to know? Do you have questions about how public power or your municipally-owned utility works? Would you like to learn more tips and tricks as to how you can improve your home's energy efficiency?

Reach out to [newsletter@impa.com](mailto:newsletter@impa.com) to suggest topics for future *Municipal Power News* newsletters and let us know what articles you enjoy most, and what you'd like to see next!



## Panhandle Pathway Benefits Winamac

-continued from page 1

comes solely from grants, fundraisers, and private donations.

"When we started the Friends of the Panhandle Pathway, the area was sparse and overgrown where the railway used to be," said John Bawcum, President of the Friends of the Panhandle Pathway. "It's taken hundreds of volunteer hours and years of dedication to get the trail where it is now, but we're proud of how far we've come. Now, Hoosiers from Winamac to Kenneth, Indiana, can enjoy nature walks with family and friends on the trail. It's also been a great place for local schools to take students out and provide experiential learning in their education."

Not only does the Panhandle Pathway provide a great quality of life



## Follow IMPA on Social Media!



Indiana Municipal Power Agency



@impapower



@ImpaPower



Indiana Municipal Power Agency

amenity for Hoosiers, but it also functions as an economic development tool. Trail construction nearly always brings a positive return on investment to communities nationwide, bringing in tourists and new visitors. As reported by Wabash River Enhancement Corporation—an organization dedicated to preserving the Wabash River—Indiana trail users spend on average of \$3,500 per year, spending 3-10 times more

in local shops and restaurants than community residents. In this way, the Panhandle Pathway brings a great deal of business opportunity to Winamac. Additionally, neighborhoods around these trails can anticipate increased property values, and the establishment of trail accessibility promotes healthy living habits to the community.

Now, Pulaski County residents can look  
-continued on page 8

## What's the Word?

### Circuit Breaker

A circuit breaker is a safety device typically used in homes to interrupt the flow of electricity whenever the current level gets too high. These devices are vital in preventing house fires or other electrical hazards caused by wiring problems or equipment failures.

Typically, homes have a circuit breaker panel, which acts as the control system for the electricity in a house. Here, you can use switch controls to alter the distribution of power around your home.

While circuit breaker panels are intentionally built for easy access and use, always call a professional if you need breaker modifications, or if you are in doubt about anything. It's always best to prioritize safety when it comes to electricity!

For a chance to be featured in the newsletter and win a prize, send your recipe to:

MPN Recipes  
11610 N. College Ave.  
Carmel, IN 46032  
or  
[newsletter@impa.com](mailto:newsletter@impa.com)

The MUNICIPAL POWER NEWS is a periodic publication of the Indiana Municipal Power Agency and the 61 communities that it serves with wholesale power.

Editor: Niki Dick  
Senior Director of  
Marketing Communications

Correspondent:  
Whitney Hicks  
Communications  
Coordinator

## MEMBERS

Advance  
Anderson  
Argos  
Bainbridge  
Bargersville  
Blanchester, OH  
Bremen  
Brooklyn  
Brookston  
Centerville  
Chalmers  
Coatesville  
Columbia City

Covington  
Crawfordsville  
Darlington  
Dublin  
Dunreith  
Edinburgh  
Etna Green  
Flora  
Frankfort  
Frankton  
Gas City  
Greendale  
Greenfield

Huntingburg  
Jamestown  
Jasper  
Kingsford Heights  
Knightstown  
Ladoga  
Lawrenceburg  
Lebanon  
Lewisville  
Linton  
Middletown  
Montezuma  
New Ross

Paoli  
Pendleton  
Peru  
Pittsboro  
Rensselaer  
Richmond  
Rising Sun  
Rockville  
Scottsburg  
South Whitley  
Spiceland  
Straughn  
Tell City

Thorntown  
Tipton  
Troy  
Veedersburg  
Walkerton  
Washington  
Waynetown  
Williamsport  
Winamac

# Cooking Corner

## Darlington High School Pizza Burgers

Recipe submitted by Martha of New Ross, Indiana

- 1 lb hamburger
- 1/2 lb bologna
- 1 1/2 cups pizza sauce
- Italian seasoning to taste
- Salt and Pepper
- 1/2 tsp garlic powder
- 4-8 oz pizza cheese
- 1 dozen hamburger buns

Mix hamburger and bologna. Chop bologna in food processor. Brown until hamburger is no longer pink. Add salt, pepper, garlic, and italian seasoning. Stir in pizza sauce. Should not be too wet. Let cool slightly. Add cheese and spoon onto half of a bun. Bake 350 until hot. May add more cheese on top. Makes 2 dozen.

## Apple Dumplings

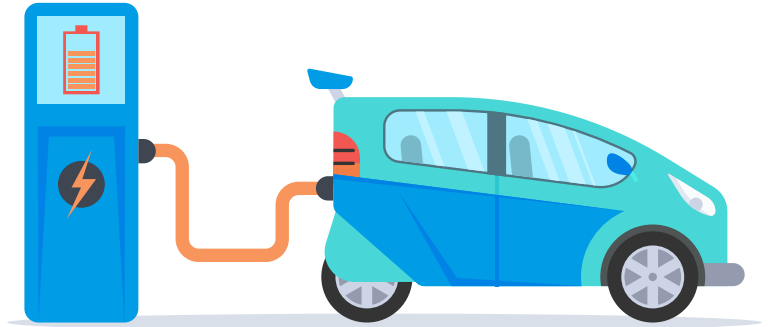
Recipe submitted by Jamie of Linton, Indiana

- 2 cans crescent rolls
- 2 large Granny Smith apples
- 1 1/2 sticks butter
- 1 1/2 cups sugar
- 1 tsp cinnamon
- 1 cup Mountain Dew

Cut apples into 8 slices each and wrap each slice into a crescent roll. Mix butter, sugar and cinnamon; bring to a boil then spoon over rolls. Pour on Mountain Dew next. Some people will add the Mountain Dew in with the butter, sugar and cinnamon. Bring to a boil. Bake at 350 degrees for 45 minutes.

# The Benefits of Electric Vehicles

In the last issue of the Municipal Power News, we asked readers to share some of the advantages of driving an electric car rather than a traditional gas powered vehicle. We received a number of great comments from our readers—check out what some of you said!



“One significant benefit of driving an electric vehicle (EV) over a gas-powered car is the cost savings associated with fuel and maintenance. Electric vehicles are more energy-efficient, allowing drivers to cover more miles per unit of energy compared to internal combustion engine vehicles. With electricity generally being cheaper than gasoline, EV owners can save significantly on fuel costs over time. Furthermore, electric vehicles have fewer moving parts and require less frequent maintenance. They don’t need oil changes, spark plug replacements, or timing belt adjustments, reducing ongoing maintenance expenses. This combination of lower fuel costs and reduced maintenance requirements makes electric vehicles a cost-effective choice for environmentally conscious drivers.” – Mario, Richmond

Spot on answer! The energy efficiency of EVs, as well as their low maintenance needs, make these vehicles remarkably safe and dependable. Like Mario, many of our other readers mentioned the environmental benefits of EVs:

“A benefit of driving an electric car is zero tailpipe emissions.” – Sue, Bremen

“Electric vehicles are better for the environment by having a lesser carbon footprint.” – Todd, Winamac

“Lower carbon footprint.” – Charlie, Bainbridge

This is also a great observation—No power source is completely benign environmentally. While the mining and production of the battery components causes emissions, EVs may have an edge when considering lifetime emissions of EVs versus conventional gas powered cars. As renewable energy generation becomes more popular, the electricity that fuels EVs is also becoming cleaner. This reduction in emissions improves the air quality of your community and supports renewable resource integration.

The popularity of electric vehicles steadily rises as consumers learn about the numerous benefits that they provide as compared to gas powered cars. While EVs may not be for everyone, their use is expected to grow in the coming decade. As a member of a public power utility, EVs also benefit your entire community as their fuel supply comes from your local utility. The energy purchased to charge an electric vehicle helps to support infrastructure upgrades, hometown jobs, and steady electric rates that are provided by public power utilities. Next time you’re in the market for a new vehicle, consider going electric!

Indiana Municipal Power Agency  
11610 N. College Ave.  
Carmel, IN 46032

PRE-SORTED  
STANDARD  
U.S. Postage  
PAID  
Indianapolis, IN  
Permit # 9555



The Municipal Power News is published  
by the Indiana Municipal Power  
Agency and the Town of Winamac.

IMPA Commissioner: Brad Zellers

## Panhandle Pathway

-continued from page 5

forward to enhancements to the Prairie Grass section of the Panhandle Pathway trail as they take walks or bike rides this summer. While enjoying the trails this season, always keep the following rules in mind to pay respect to the environment and the volunteers that keep these trails beautifully maintained:

- Open from dawn to dusk.
- Motor vehicles, horses, and hunting prohibited.
- Obey stop signs.
- Do not trespass on adjoining property.
- Walk or ride on the right side of the trail—when passing, give warning and move to the left.
- Helmets recommended for cyclists and rollerbladers.
- Take photos and leave footprints, but always pack up your trash!
- Pets are welcome, but please clean up after them.
- Report unauthorized use or vandalism to the authorities. •

